



ClimDev-Africa

Green Economy in the context of Africa: Ethiopia CRGE

Selam Kidane Abebe

EPA



Right to Development

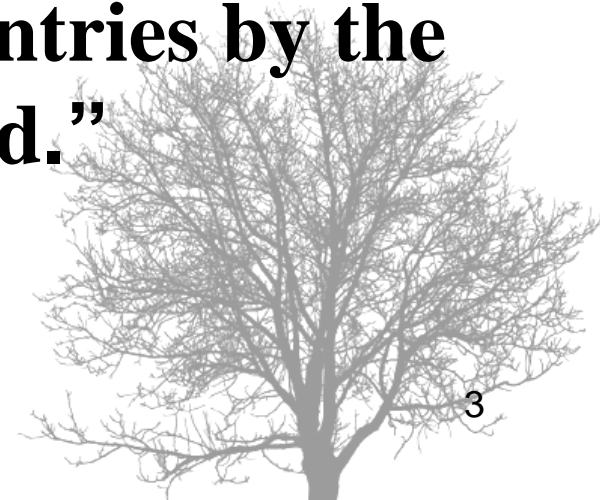
- Climate Change is a global phenomenon with local implications. Even if the contribution from developing countries has been very small, only about 2% from Africa, it is the most vulnerable to the adverse impacts of climate change.
- African government set ambitious targets to alleviate poverty and provide adequate standard of living. The government of Ethiopia introduced the Growth and Transformation Plan for (2010/11-2014/15). The plan promotes accelerated economic growth and “the right to development” with a vision stated;
- *“to see the country where democratic rule, good governance and social justice reigns, upon the involvement and free will of its people; and once extricating itself from poverty becoming a middle –income economy*



Development and Climate Change

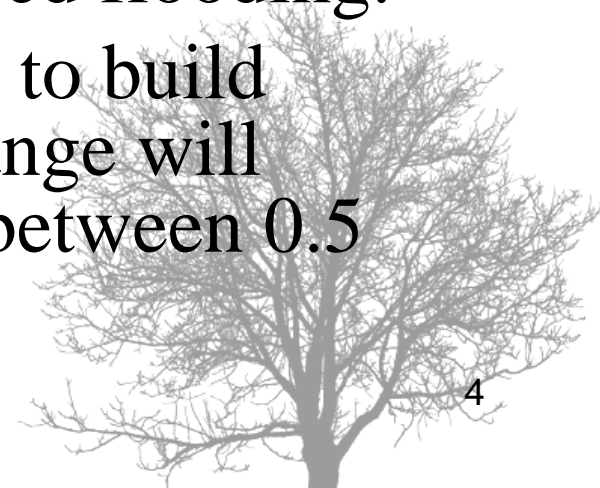
- The vision for mainstreaming climate change is embodied in the political document – GTP

“sustain economic growth and place Ethiopia among the middle income countries by the year 2025 and beyond.”

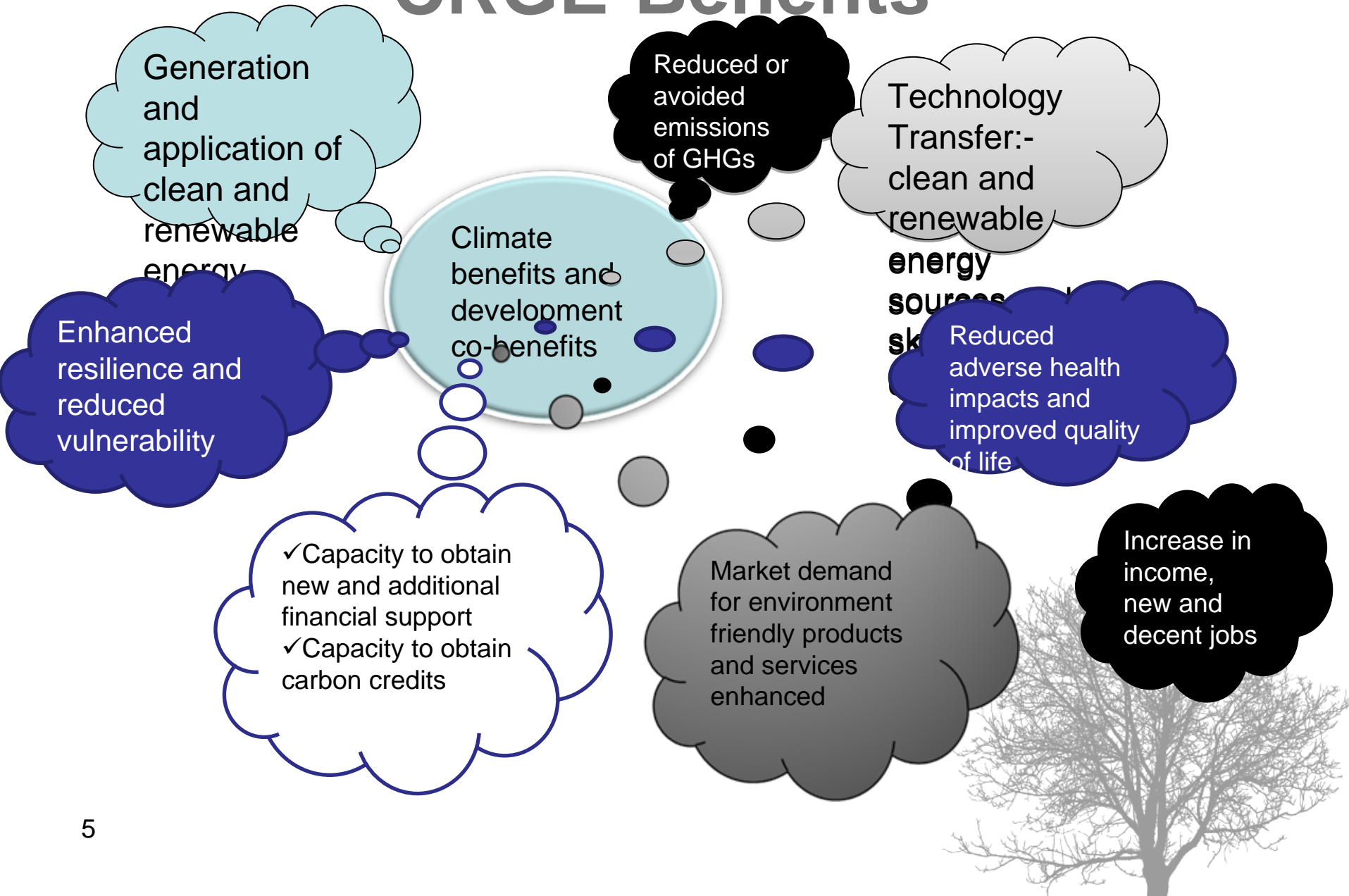


Why..... Green Economy?

- Ethiopia will see further warming in all seasons of between 0.7°C and 2.3°C by the 2020's and of between 1.4°C and 2.9°C by the 2050s
- this warming will be associated with heat waves and higher evapo-transpiration.
- More regular heavy rainfall events are expected and this is likely to result in increased flooding.
- recent studies indicate, unless steps to build resilience are effective, climate change will reduce Ethiopia's GDP growth by between 0.5 and 2.5% each year.



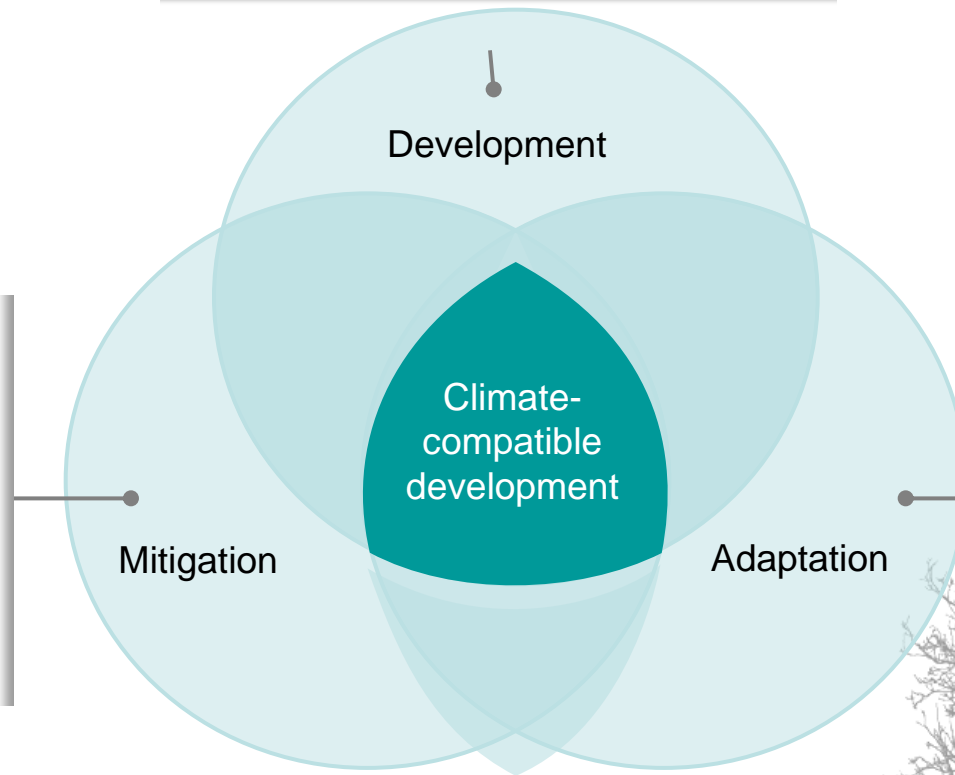
CRGE-Benefits



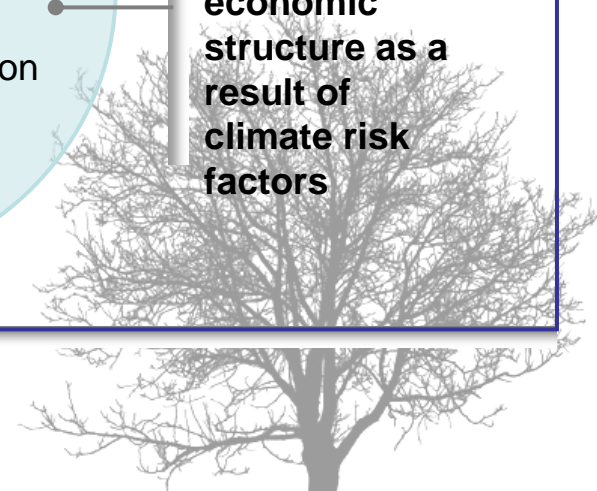
Development and Green Economy

Economic development, although essential for job and income creation, cannot be addressed independent of climate change risks (& opportunities)

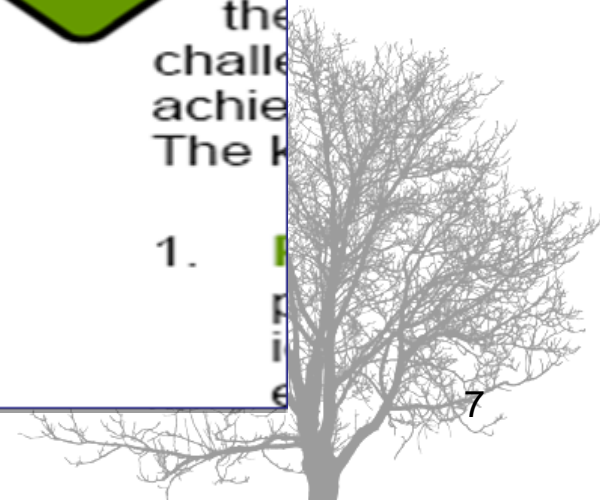
Power, agriculture and forestry related mitigation (REDD+¹) is the cornerstone of climate compatible development for many developing countries



Adaptation prepares for changes in economic structure as a result of climate risk factors



Road map to a CRGE



Structure of CRGE

**Climate
Resilience/
Adaptation**

Green Growth/ Mitigation

**Horizontal –
across
sectors**

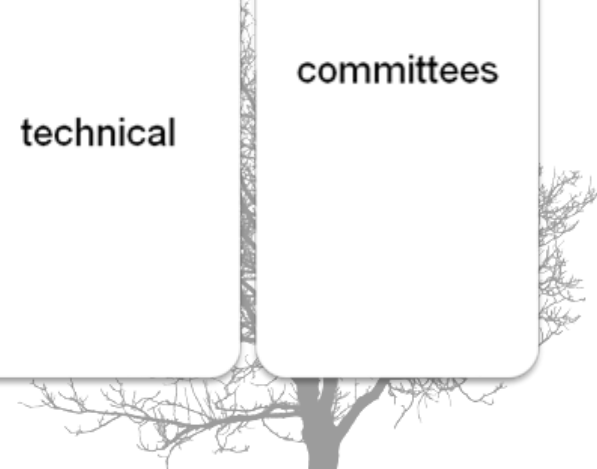
**Vertical –
through out
the regions**

**Inter-
ministerial
committee**

**Technical
Committee**

technical

committees



5 Steps to a Green Economy



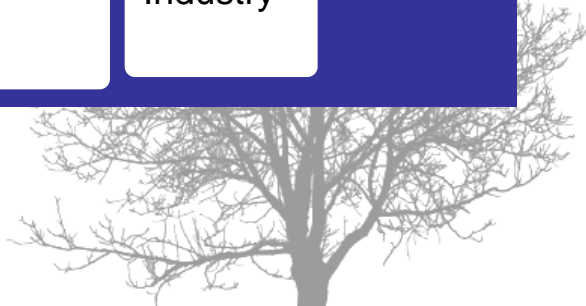
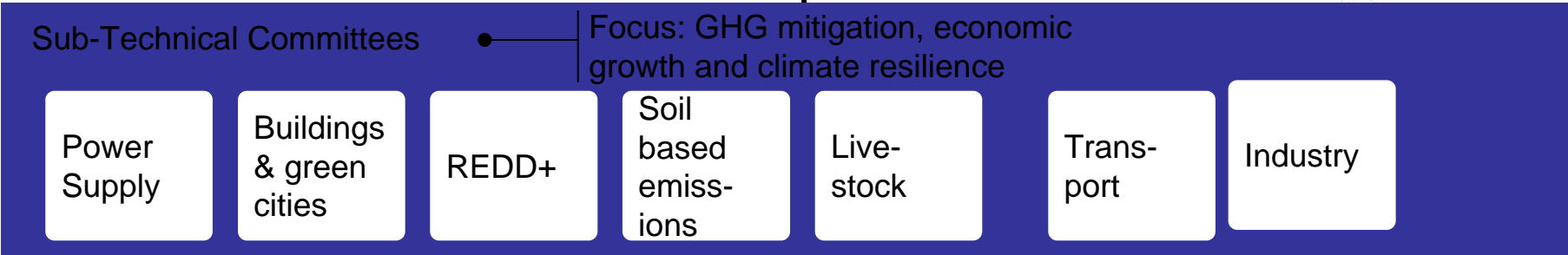
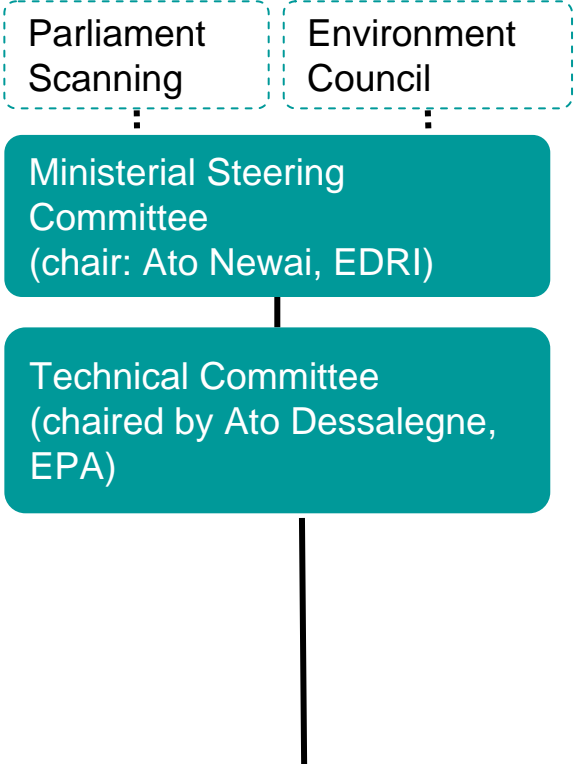
Status

- Completed for all sectors during Phase 1
- Result to be confirmed/validated by Technical Committee

- First assessment¹ made for 4 sectors
 - Power
 - REDD
 - Land use
 - Livestock
- Assessment to be made for remaining sectors
 - Buildings
 - Transports
 - Industry

- To be completed for all sectors during Phase 2

CRGE



Thank you

Selam Kidane Abebe
Environmental Law Expert
EPA

selam.k.abebe@gmail.com

