



Africa Statistics Flash

Selected Socio-Economic Indicators on Africa

March 2017



United Nations
Economic Commission for Africa

TABLE OF CONTENTS

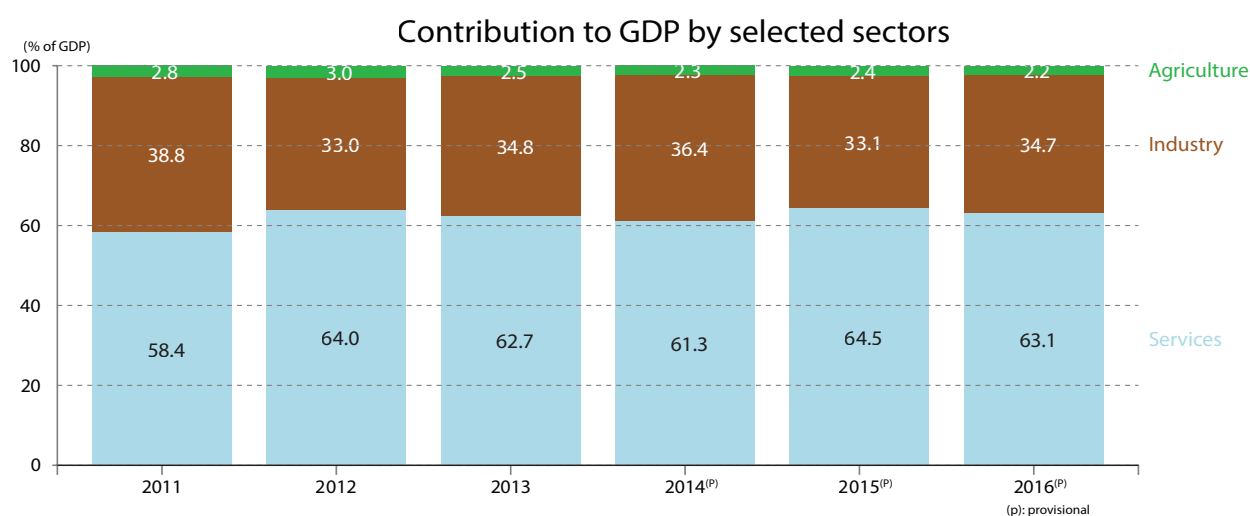
COUNTRY FOCUS: BOTSWANA	1
AFRICA: KEY MACROECONOMIC INDICATORS	4
SUBREGION: KEY MACROECONOMIC INDICATORS	5
COUNTRY: KEY MACROECONOMIC INDICATORS	6
COUNTRY: CHANGE IN SECTORAL COMPOSITION OF GDP	7
COUNTRY: KEY SOCIAL INDICATORS	8
INTRA-AFRICAN EXPORT	10
AFRICA'S TRADE WITH BRICS	11
FOREIGN DIRECT INVESTMENT & OFFICIAL DEVELOPMENT ASSISTANCE	12
NOTE	13
SOURCE LIST	14

COUNTRY FOCUS: BOTSWANA

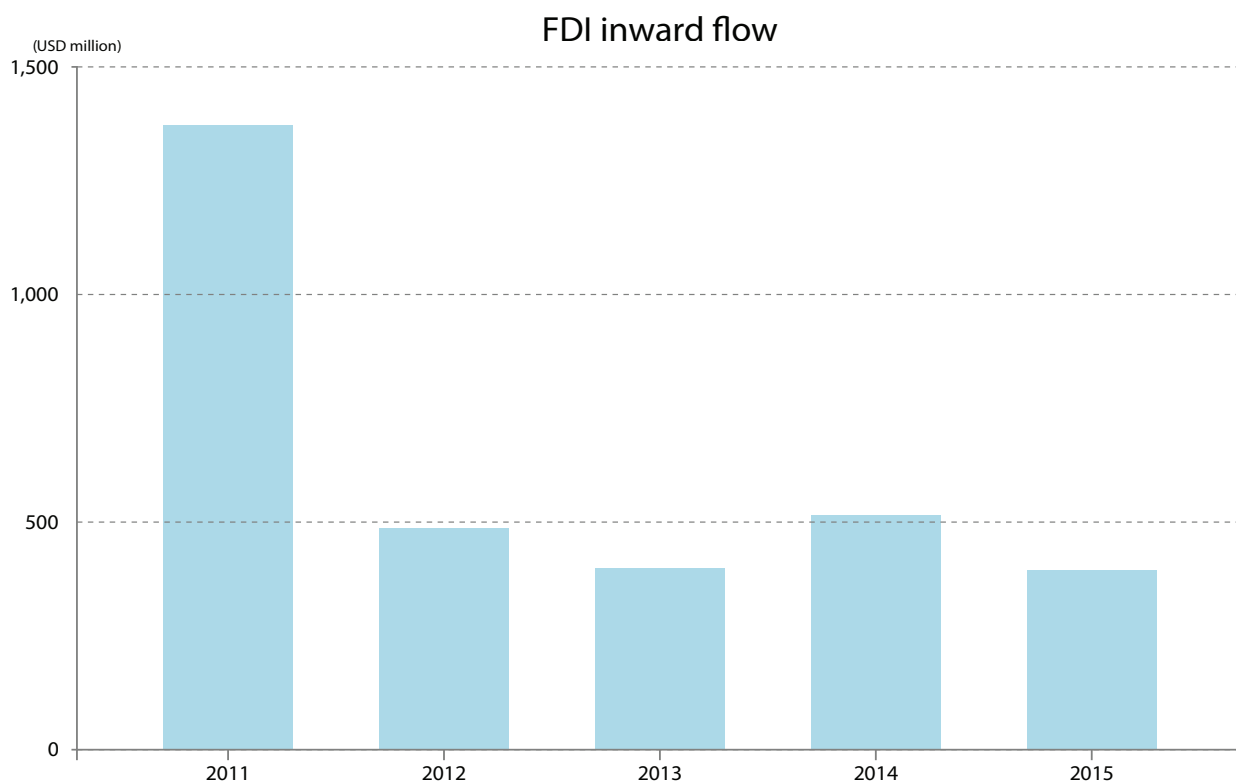
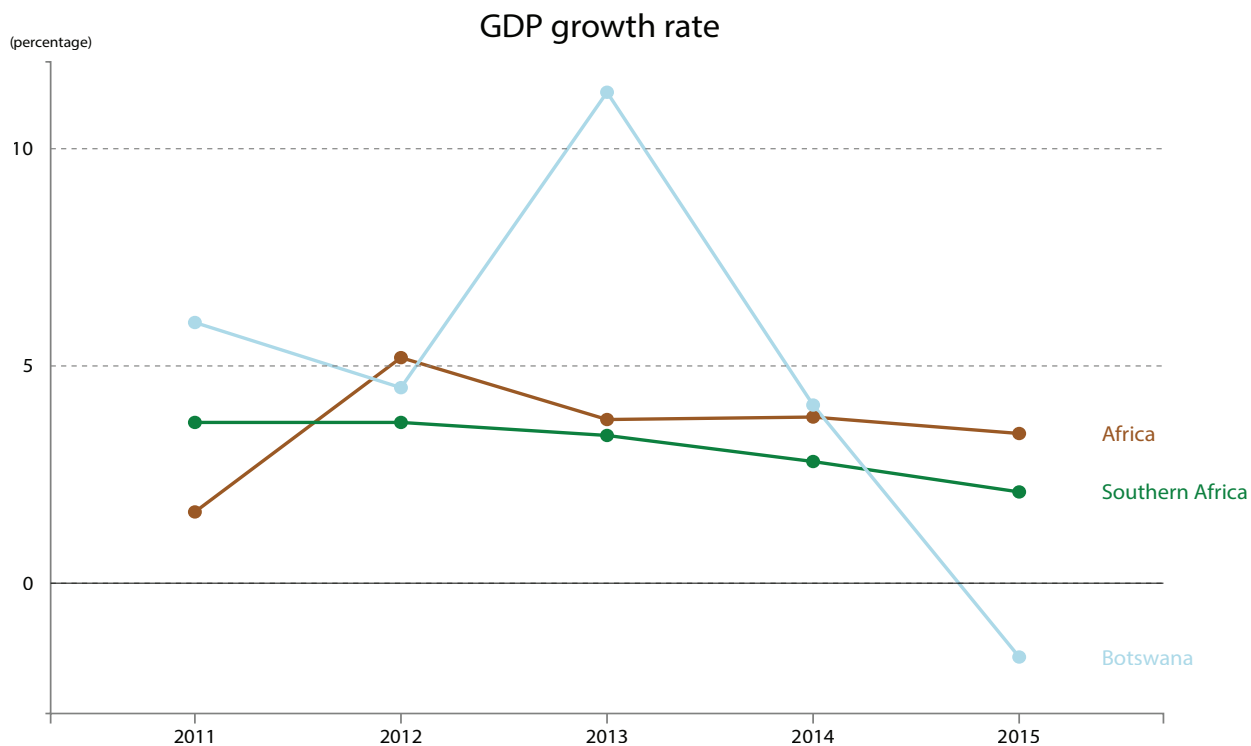
Botswana key macroeconomic indicators

Indicators	2011	2012	2013	2014	2015	2016
GDP per capita, nominal (Pula)	51,844	53,116	59,314	67,868	66,757	76,446
Real GDP growth (%)	6.0	4.5	11.3	4.1	-1.7	4.3
Inflation (annual, %)	8.5	7.5	5.9	4.4	3.1	2.8
Gross investment (% of GDP)	15.4	14.9	20.8	19.8	14.2	...
Gross saving (% of GDP)	13.9	7.7	9.8	11.7	7.7	...
Current account balance incl. official transfer (% of GDP)	3.1	-1.1	9.3	15.6	7.2	...
External debt (% of GDP)	3.1	-1.1	9.3	15.6	7.2	...
Share of industry (% of GDP)	38.8	33.0	34.8	36.4 ^(P)	33.1 ^(P)	34.7 ^(P)
(of which manufacturing)	6.4	6.6	6.4	5.8 ^(P)	6.4 ^(P)	5.7 ^(P)
Debt service ratio (% of export)	1.0	0.7	2.1	0.6	3.1	...

(p): provisional



COUNTRY FOCUS: BOTSWANA



COUNTRY FOCUS: BOTSWANA

Top 5 export products (USD million)

Product	2011	2012	2013	2014	2015
Natural or cultured pearls, precious	4,530	4,829	6,336	6,765	5,280
Nickel and articles thereof	355	333	419	334	320
Electrical machinery and equipment and parts	70	72	55	57	126
Meat and edible meat offal	48	65	118	117	117
Machinery and mechanical appliances; parts thereof	76	60	72	75	69
Total (of the top 5)	5,079	5,360	7,000	7,348	5,912
Total	5,882	5,971	7,573	7,915	6,319

Top 5 import products (USD million)

Product	2011	2012	2013	2014	2015
Natural or cultured pearls, precious	866	2,165	2,033	2,666	2,977
Mineral fuels, mineral oils	1,211	1,306	1,284	1,215	893
Machinery and mechanical appliances; parts thereof	947	716	594	558	534
Vehicles other than railway or tramway rolling stock	646	643	553	555	432
Electrical machinery and equipment and parts	730	470	268	327	343
Total (of the top 5)	4,400	5,299	4,733	5,321	5,179
Total	7,272	8,025	7,433	7,830	7,626

Top 5 export destinations (USD million)

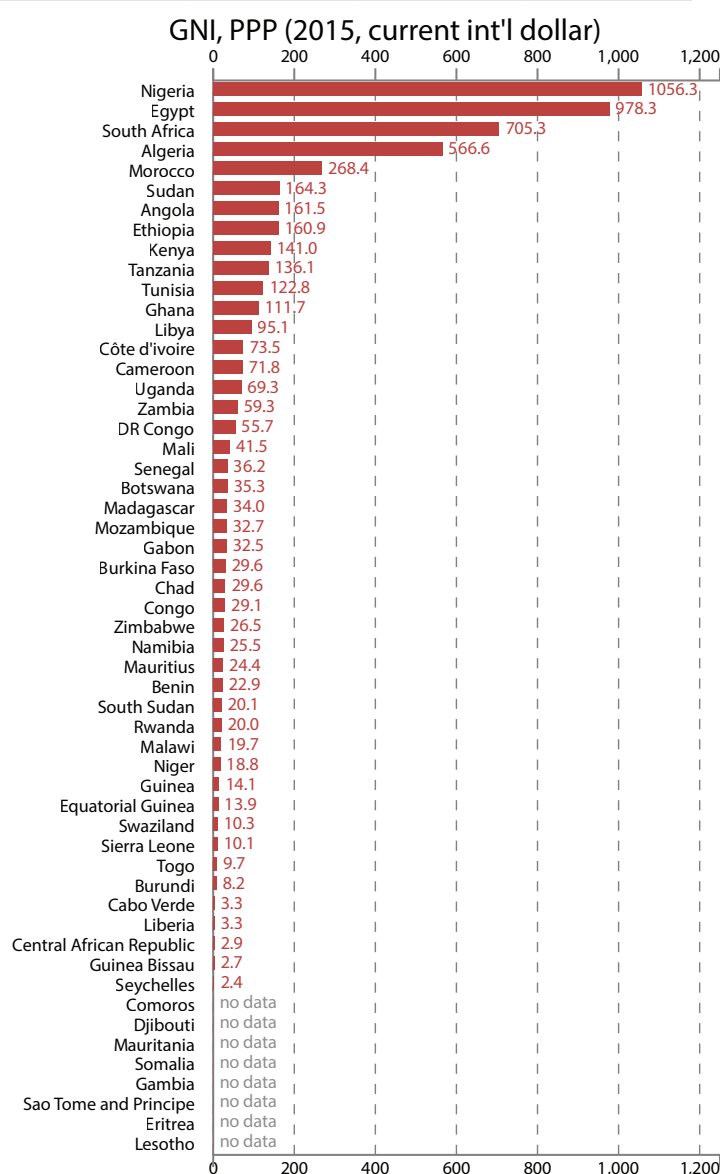
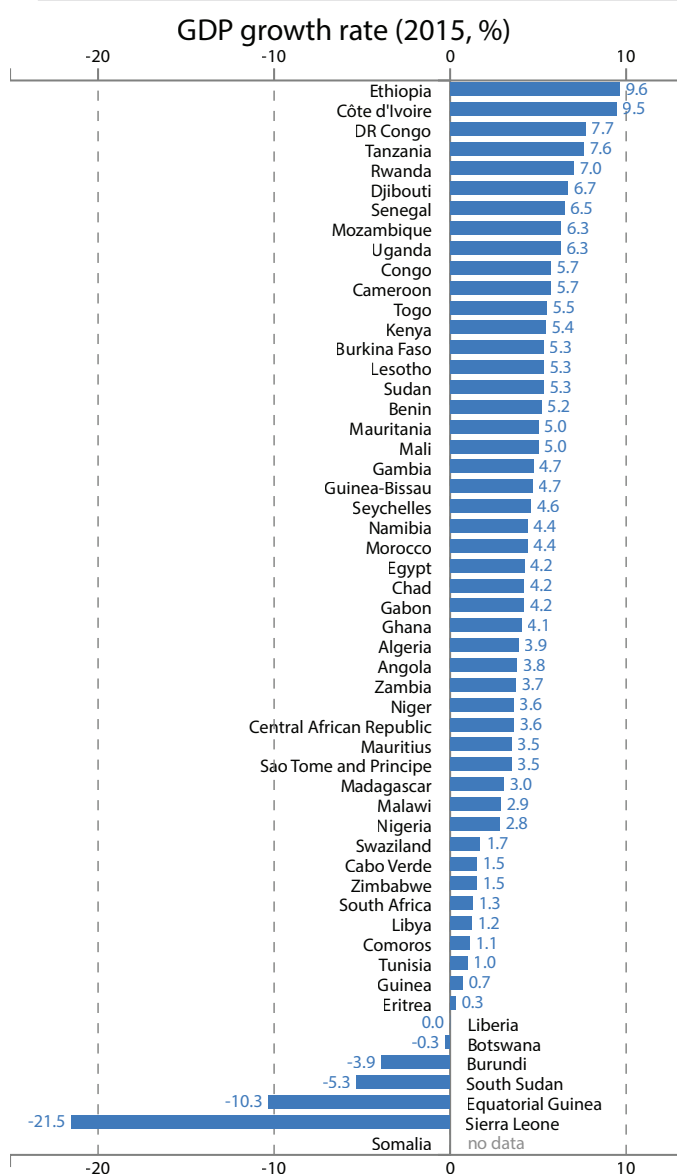
Country	2011	2012	2013	2014	2015
Belgium	160	260	975	2,041	1,253
South Africa	794	782	806	933	988
Namibia	75	68	230	1,180	784
India	31	111	185	584	745
Canada	0	0	27	323	397
Total (of the top 5)	1,061	1,222	2,222	5,061	4,167
Total	5,882	5,971	7,573	7,915	6,319

Top 5 import origins (USD million)

Country	2011	2012	2013	2014	2015
South Africa	4,779	5,039	4,889	4,953	4,455
Namibia	62	454	515	944	1,123
Canada	6	4	225	784	510
Belgium	85	105	379	312	210
China	795	223	107	88	104
Total (of the top 5)	5,726	5,825	6,113	7,081	6,402
Total	7,272	8,025	7,433	7,830	7,626

AFRICA: KEY MACROECONOMIC INDICATORS

Indicators	2011	2012	2013	2014	2015
GDP, PPP (current international \$ billion) ¹	4,720	5,034	5,304	5,577	5,819
GDP per capita (current, USD) ¹	2,087	2,171	2,199	2,209	1,966
Real GDP growth (%)	1.6	5.2	3.8	3.8	3.4
Inflation (annual, growth rate) ¹	9.0 ²	8.6	6.4	7.1	7.0
General govt. net lending/borrowing (% of GDP)	-3.2	-3.2	-5.0	-6.3	-7.4
Total investment (% of GDP) ³	22.2	22.6	22.6	23.2	23.0
Gross national saving (% of GDP) ⁴	21.6	20.3	19.6	19.0	16.4
Real export growth (%)	0.3	19.5	-0.7	0.0	2.1
Trade balance (% of GDP)	2.0	1.0	-0.8	-3.3	-6.8
Share of Africa's export (%)	3.1	3.2	3.0	2.7	2.4
Terms of trade index (2000=100)	185.6	191.7	188.0	180.4	153.7
Current account balance (% of GDP) ²³	-0.3	-0.7	-2.3	-4.5	-7.0
FDI (inward flow; USD million)	47,786 ²	55,156	52,154	58,300	54,079
FDI (outward flow; USD million) ⁵	6,122	12,386	15,543	15,163	11,325
International reserve (USD billion) ⁶	532.3	575.0	571.3	508.5	351.8
Total external debt (% of GNI) ⁷	20.4	21.8	22.4	21.8	...
Share of industry (% of GDP) ¹	33.3	33.4	32.3	31.9	30.1
(of which manufacturing) ¹	10.4	10.2	10.4	10.8	11.0



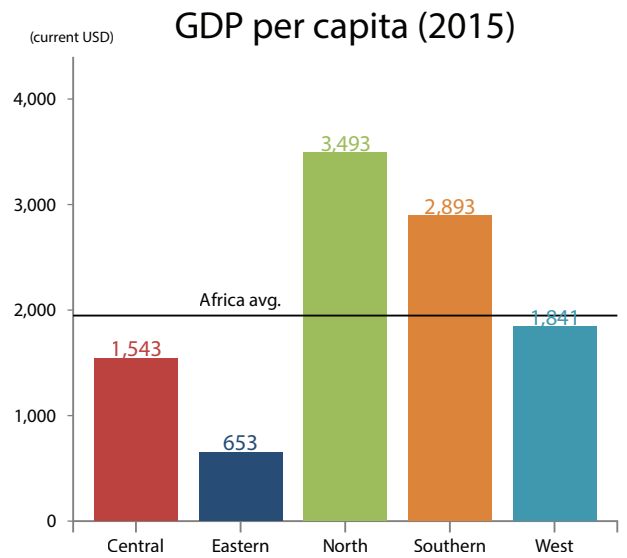
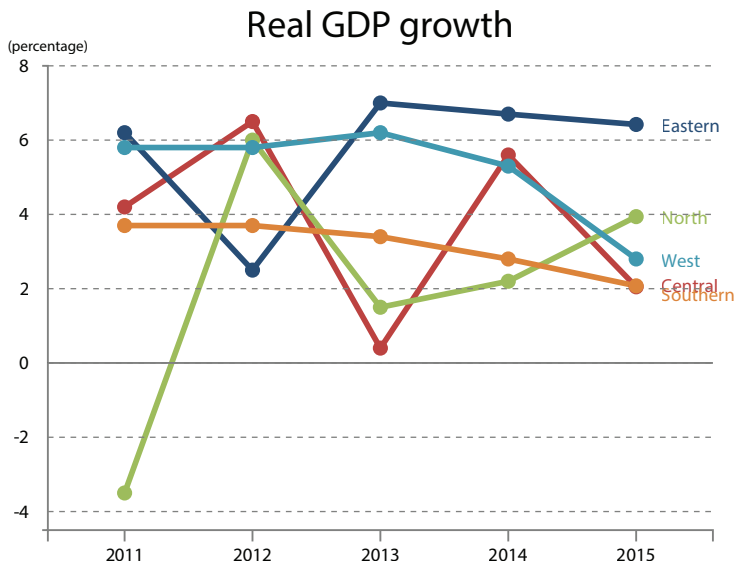
SUBREGION: KEY MACROECONOMIC INDICATORS

Indicators	Central Africa					Eastern Africa				
	2011	2012	2013	2014	2015	2011	2012	2013	2014	2015
Real GDP growth (%)	4.2	6.5	0.4	5.6	2.1	6.2	2.5	7.0	6.7	6.4
GDP per capita (current, USD) ⁹	2,107	2,030	2,028	2,032	1,543	558 ²	617	668	710	673
Inflation (annual, %) ⁹	2.8	4.3	2.2	2.4	3.0	18.8	15.2	5.9	5.7	8.6
Gen. govt. net lend/borrow (% of GDP)	2.3	-0.9	-2.9	-4.0	-5.5	-2.4	-3.2	-3.4	-3.9	-3.7
Total investment (% of GDP) ⁹	29.8	29.1	30.3	32.1	31.3	24.7	25.9	25.3	25.7	27.4
Gross national saving (% of GDP) ⁹	27.2	26.5	24.7	25.6	20.3	19.5	17.8	16.7	17.2	18.0
Current account balance (% of GDP) ⁹	1.8	-0.3	-1.9	-4.5	-7.8	-7.7	-8.5	-8.2	-8.7	-10.2
FDI inward flow (USD million)	5,557	5,381	5,511	6,742	3,678	6,155 ²	8,614	8,067	9,439	9,475
FDI outward flow (USD million) ^{10,24}	-129	-22	-293	-132	-148	96	500	389	416	733
International reserve (USD billion) ¹¹	15.2	17.0	17.7	14.9	9.5	15.2	18.8	20.4	20.8	19.1
Total external debt (% of GDP) ¹²	17.4	18.9	23.7	23.2	...	26.0	24.3	25.7	26.5	...
Share of industry (% of GDP) ¹	57.8	57.4	54.7	52.8	46.5	23.7	21.9	22.4	23.0	22.9
(of which manufacturing)	7.6	7.6	8.1	8.6	11.3	9.3	9.1	8.8	8.3	8.3

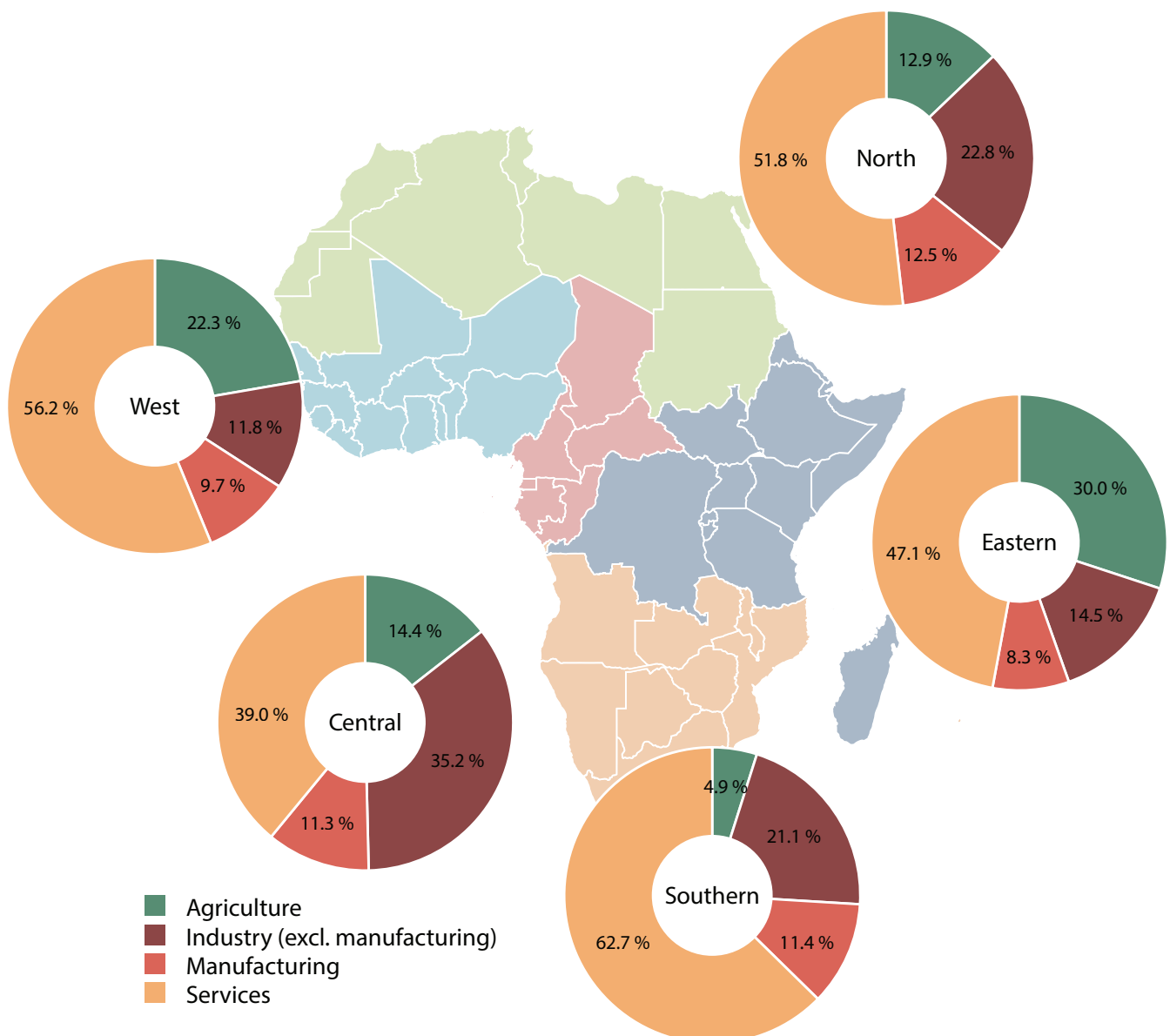
Indicators	North Africa					Southern Africa				
	2011	2012	2013	2014	2015	2011	2012	2013	2014	2015
Real GDP growth (%)	-3.5	6.0	1.5	2.2	3.9	3.7	3.7	3.4	2.8	2.1
GDP per capita (current, USD)	3,440	3,705	3,670	3,645	3,493	3,748	3,650	3,491	3,365	2,893
Inflation (annual, %)	9.8	11.2	10.4	13.3	10.8	6.5	6.4	6.4	6.2	5.7
Gen. govt. net lend/borrow (% of GDP)	-5.9	-4.9	-7.5	-10.3	-12.3	-1.8	-2.3	-3.2	-4.2	-4.2
Total investment (% of GDP)	24.9	24.9	25.4	26.2	27.0	19.8	21.0	21.2	21.4	19.2
Gross national saving (% of GDP)	25.4	23.1	22.7	22.8	19.8	18.6	17.8	16.8	16.2	13.1
Current account balance (% of GDP)	1.0 ¹⁴	1.6	-2.1	-5.2	-9.3	-0.6	-2.4	-3.5	-5.1	-6.2 ²²
FDI inward flow (USD million)	8,137	16,987	13,880	12,544	13,419	9,570	8,690	11,329	17,959	18,108
FDI outward flow (USD million) ^{14,25}	1,492	3,100	405	800	1,846	2,083	5,306	12,837	11,862	6,878
International reserve (USD billion) ¹⁵	349.4	368.2	364.5	323.1	189.6	97.5	105.1	104.0	99.7	90.5 ¹⁷
Total external debt (% of GDP) ^{16,18}	18.5	19.7	20.5	16.9	...	28.7	34.8	36.1	38.9	...
Share of industry (% of GDP)	39.1	40.4	39.2	38.8	35.3	34.7	34.5	33.6	33.8	32.5
(of which manufacturing)	12.6	12.0	12.1	12.7	12.5	11.9	11.6	11.6	11.6	11.4

Indicators	West Africa					Africa				
	2011	2012	2013	2014	2015	2011	2012	2013	2014	2015
Real GDP growth (%)	5.8	5.8	6.2	5.3	2.8	1.6	5.2	3.8	3.8	3.4
GDP per capita (current, USD)	1,801	1,927	2,093	2,184	1,841	2,087	2,171	2,199	2,209	1,966
Inflation (annual, %)	6.0	4.6	2.6	1.6	2.3	9.0	8.6	6.4	7.1	7.0
Gen. govt. net lend/borrow (% of GDP)	-0.9	-1.3	-3.3	-3.1	-4.2	-3.2	-3.2	-5.0	-6.3	-7.4
Total investment (% of GDP) ¹⁹	17.7	17.5	17.1	17.6	16.6	22.2	22.6	22.6	23.2	23.0
Gross national saving (% of GDP) ¹⁹	18.3	18.1	17.6	15.6	12.8	21.6	20.3	19.6	19.0	16.4
Current account balance (% of GDP)	0.6	1.1	0.7	-1.6	-3.6	-0.3	-0.7	-2.3	-4.5	-7.0
FDI inward flow (USD million)	18,367	15,485	13,368	11,615	9,399	47,786	55,156	52,154	58,300	54,079
FDI outward flow (USD million) ²⁰	2,580	3,502	2,206	2,216	2,015	6,122	12,386	15,543	15,163	11,325
International reserve (USD billion) ²¹	55.0	65.8	64.7	50.0	43.1	532.3	575.0	571.3	508.5	351.8
Total external debt (% of GDP)	12.0	10.7	11.1	11.2	...	20.4	21.8	22.4	21.8	...
Share of industry (% of GDP)	25.5	24.9	24.0	23.3	21.5	33.3	33.4	32.3	31.9	30.1
(of which manufacturing)	7.4	7.7	8.5	9.0	9.7	10.4	10.2	10.4	10.8	11.0

SUBREGION: KEY MACROECONOMIC INDICATORS



Sectoral share of GDP (2015)



COUNTRY: KEY MACROECONOMIC INDICATORS

Country	GDP at current (2015, bil. int'l \$)	Inflation (2015, %)	Total investment (2015, % of GDP)	Trade balance (2015, % of GDP)	Debt service ratio (% of exports)
Algeria	578.7	4.8	50.3	-7.4	0.4 (2014)
Angola	184.4	10.3	9.3	8.4	10.7 (2014)
Benin	22.9	0.3	27.8	-12.2	5.1 (2013)
Botswana	34.8	3.0	27.8	-5.7	2.3 (2013)
Burkina Faso	30.9	0.9	14.2	-9.9	2.8 (2013)
Burundi	7.7	5.6	10.6	-20.9	13.7 (2013)
Cabo Verde	3.4	0.1	40.7	-35.0	4.8 (2014)
Cameroon	72.6	2.7	21.8	-9.5	2.7 (2013)
Central African Republic	3.0	5.4	14.5	3.6	...
Chad	30.5	3.6	27.1	3.0	...
Comoros	1.2	2.0	18.4	-37.5	0.7 (2014)
Congo	29.4	3.2	33.4	-17.8	...
Côte d'Ivoire	78.6	1.2	18.2	3.9	11.6 (2014)
DR Congo	62.9	1.0	15.6	1.8	3.1 (2014)
Djibouti	3.1	2.1	60.4	-35.7	6.1 (2014)
Egypt	1,047.9	11.0	14.0	-13.7	12.7 (2014)
Equatorial Guinea	25.4	0.1	54.4	3.5	...
Eritrea	8.7	9.0	7.6	-11.0	...
Ethiopia	161.6	10.1	39.8	-36.7	7.2 (2012)
Gabon	34.6	2.0	37.8	22.9	...
Gambia, The	3.3	17.2	19.8	-32.3	7.1 (2012)
Ghana	114.7	8.2	23.9	-8.8	5.1 (2014)
Guinea	15.0	1.5	10.2	3.2	4.2 (2013)
Guinea-Bissau	2.7	7.7	11.2	0.3	0.3 (2013)
Kenya	141.9	6.6	22.5	-16.5	11.0 (2014)
Lesotho	5.8	4.8	29.8	-61.3	2.8 (2013)
Liberia	3.7	1.4	...	-89.2	0.7 (2013)
Libya	92.6	8.0	31.6	-20.0	...
Madagascar	35.4	7.4	17.1	-6.8	2.5 (2013)
Malawi	20.4	21.9	12.0	-20.2	4.2 (2014)
Mali	35.8	1.0	24.0	-5.5	3.0 (2013)
Mauritania	16.3	0.5	35.6	-11.2	5.6 (2013)
Mauritius	24.6	1.3	25.5	-20.2	26.8 (2014)
Morocco	273.5	1.6	33.3	-15.6	15.1 (2014)
Mozambique	33.2	2.4	28.2	-35.1	2.6 (2013)
Namibia	25.3	3.4	29.4	-28.5	...
Niger	19.1	9.0	42.1	-20.1	2.5 (2013)
Nigeria	1,091.7	0.1	14.5	0.6	0.8 (2014)
Rwanda	20.4	2.5	25.0	-19.1	3.4 (2013)
Sao Tome and Principe	0.7	5.3	26.2	-41.1	15.1 (2014)
Senegal	36.7	9.0	25.3	-21.4	8.9 (2013)
Seychelles	2.4	4.0	31.8	-36.1	...
Sierra Leone	10.0	6.8	16.3	-26.4	1.2 (2013)
Somalia
South Africa	723.5	4.6	19.5	-2.8	8.6 (2014)
South Sudan	23.7	52.8	9.9
Sudan	167.0	16.9	17.3	-6.0	4.4 (2014)
Swaziland	10.8	5.0	10.9	4.2	1.3 (2014)
Tanzania	138.5	5.6	31.3	-10.7	1.9 (2013)
Togo	10.8	1.8	24.2	-21.9	2.2 (2013)
Tunisia	127.0	4.9	21.8	-14.2	8.7 (2014)
Uganda	79.9	5.8	26.5	-14.4	2.1 (2014)
Zambia	62.7	10.1	34.6	-6.8	3.7 (2014)
Zimbabwe	28.1	-2.4	13.0

COUNTRY: CHANGE IN SECTORAL COMPOSITION OF GDP

Country	Agriculture (% of GDP)		Industry (% of GDP)		(Manufacturing, % of GDP)		Services (% of GDP)	
	2011	2015	2011	2015	2011	2015	2011	2015
Algeria	8.3	12.2	50.5	37.3	3.7	4.5	41.2	50.5
Angola	5.4	6.8	60.3	51.2	3.8	4.6	34.3	42.0
Benin	25.2	23.2	23.9	24.9	14.7	15.7	50.9	51.9
Botswana	2.7	2.4	40.2	33.4	6.3	6.3	57.0	64.2
Burkina Faso	33.7	34.5	27.0	21.8	7.7	6.7	39.2	43.7
Burundi	38.8	36.3	17.6	13.9	12.5	9.1	43.6	49.8
Cabo Verde	9.1	9.5	20.6	19.8	6.3	6.5	70.3	70.7
Cameroon	23.4	22.7	29.4	28.3	14.6	13.9	47.2	49.1
Central African Republic	42.3	34.9	24.0	24.8	18.3	20.2	33.7	40.4
Chad	22.8	25.4	45.8	39.0	7.8	10.1	31.4	35.6
Comoros	37.7	30.7	11.1	4.0	5.8	1.6	51.1	65.3
Congo	3.6	4.7	78.6	70.0	3.5	4.8	17.7	25.3
Côte d'Ivoire	28.3	23.7	26.4	28.3	14.5	16.9	45.3	48.1
DR Congo	22.0	19.9	43.1	44.2	16.2	17.3	34.9	35.9
Djibouti	3.5	3.3	17.8	21.4	3.3	2.3	78.7	75.3
Egypt	14.5	11.2	37.6	36.3	16.5	16.6	48.0	52.5
Equatorial Guinea	1.4	1.2	95.5	73.1	0.1	18.7	3.1	25.7
Eritrea	17.0	17.2	24.1	23.5	6.1	6.0	58.9	59.3
Ethiopia	44.4	40.5	10.4	16.0	4.0	4.0	45.2	43.5
Gabon	3.8	3.8	60.4	54.5	5.8	6.5	35.8	41.7
Gambia, The	23.6	21.1	14.7	14.9	5.8	5.1	61.7	64.0
Ghana	25.3	19.0	25.6	26.9	6.9	4.7	49.1	54.1
Guinea	20.2	19.8	43.8	32.8	7.2	10.8	36.0	47.4
Guinea-Bissau	45.6	45.0	13.4	14.5	11.3	12.7	41.0	40.5
Kenya	28.5	32.0	20.5	19.0	12.7	11.0	51.0	49.0
Lesotho	8.4	7.7	32.5	31.3	11.6	10.4	59.1	61.0
Liberia	70.0	70.8	11.4	11.4	5.7	5.8	18.6	17.9
Libya	1.7	0.9	50.5	67.1	2.0	3.7	47.9	32.0
Madagascar	27.8	24.9	19.4	18.4	14.3	13.8	52.7	56.7
Malawi	31.2	26.1	16.7	16.6	10.9	9.4	52.0	57.3
Mali	39.1	39.9	22.1	19.6	6.3	13.8	38.8	40.5
Mauritania	20.3	20.9	46.9	41.7	6.8	8.2	32.9	37.4
Mauritius	3.6	2.9	25.8	22.7	16.9	16.1	70.6	74.4
Morocco	14.2	13.7	28.9	28.9	16.8	17.2	56.9	57.4
Mozambique	27.8	24.6	18.8	21.0	10.9	9.8	53.4	54.4
Namibia	8.8	6.6	29.7	30.6	14.6	8.9	61.5	62.8
Niger	41.5	39.6	17.3	19.1	5.2	6.2	41.2	41.3
Nigeria	22.3	20.9	28.3	20.4	7.2	9.5	49.4	58.8
Rwanda	34.7	34.6	15.4	15.1	5.7	5.1	49.9	50.3
Sao Tome and Principe	22.9	12.3	12.9	14.7	4.6	6.4	64.2	73.0
Senegal	14.6	15.5	24.7	24.1	14.6	13.7	60.6	60.4
Seychelles	2.6	2.7	16.3	13.6	8.7	6.4	81.1	83.8
Sierra Leone	56.1	51.4	8.1	17.6	2.3	1.8	35.8	31.1
Somalia	60.2	60.2	7.4	7.4	2.5	2.5	32.5	32.5
South Africa	2.5	2.4	29.9	28.9	13.3	13.2	67.5	68.7
South Sudan	4.5	4.6	62.2	58.0	2.8	2.3	33.3	37.4
Sudan	27.7	32.4	27.3	20.1	9.7	8.5	45.0	47.6
Swaziland	6.6	6.6	44.2	42.1	38.3	35.6	49.2	51.3
Tanzania	30.9	29.6	24.0	23.0	8.1	6.5	45.0	47.4
Togo	46.6	45.7	18.5	19.7	8.3	6.9	34.9	34.6
Tunisia	8.9	10.3	31.0	27.8	17.3	16.6	60.1	62.0
Uganda	28.4	25.6	22.8	21.5	11.8	9.2	48.7	52.9
Zambia	9.9	8.2	35.0	32.3	7.9	8.4	55.1	59.5
Zimbabwe	13.1	13.0	32.5	30.5	13.9	12.7	54.4	56.5

COUNTRY: KEY SOCIO-DEMOGRAPHIC INDICATORS

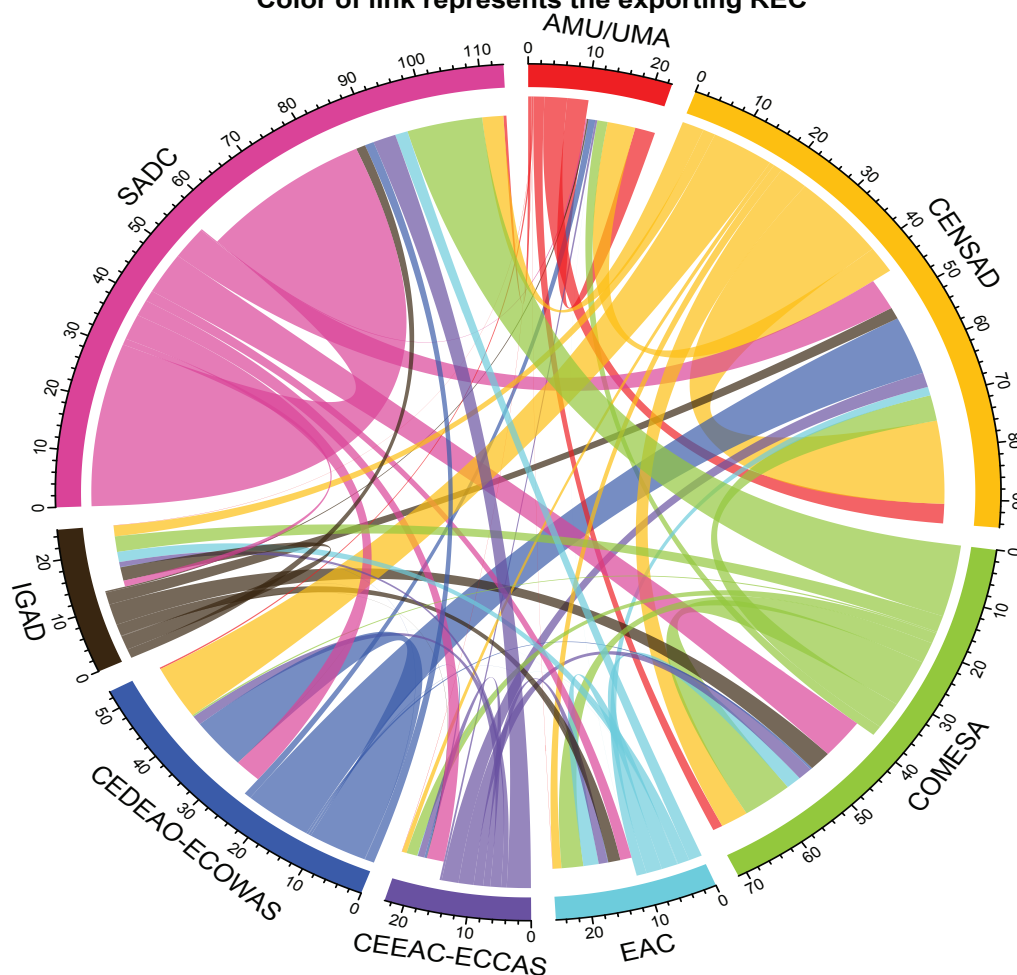
Country	Population (2016, million)	Infant mortality (2015, per 1,000)	Gross enrol. ratio, primary	Unemployment (2016, %)	Seats held by women in parli. (2016, %)	Life expectancy (2015)	Adult literacy (2015, %)
Algeria	40.4	21.9	116.2 (2015)	11.2	31.6	75.0	80.2
Angola	25.8	96.0	128.7 (2011)	6.6	38.2	52.7	71.1
Benin	11.2	64.2	129 (2015)	1.0	7.2	59.8	38.5
Botswana	2.3	34.8	108.6 (2013)	18.4	9.5	64.5	88.5
Burkina Faso	18.6	60.9	88 (2015)	3.0	11.0	59.0	36.0
Burundi	11.6	54.1	123.8 (2015)	1.6	36.4	57.1	85.6
Cabo Verde	0.5	20.7	109.9 (2015)	10.5	23.6	73.5	87.6
Cameroon	23.9	57.1	117.1 (2015)	4.5	31.1	56.0	75.0
Central African Republic	5.0	91.5	93.5 (2012)	6.9	8.6	51.5	36.8
Chad	14.5	85.0	101.4 (2013)	5.8	12.8	51.9	40.2
Comoros	0.8	55.1	103.2 (2014)	20.0	6.1	63.6	77.8
Congo	4.7	33.2	110.9 (2012)	11.2	7.4	62.9	79.3
Côte d'Ivoire	23.3	66.6	93.6 (2015)	9.3	10.6	51.9	43.1
DR Congo	79.7	74.5	107 (2014)	3.6	8.9	59.1	...
Djibouti	0.9	54.2	66.3 (2015)	6.6	10.8	62.3	...
Egypt	93.4	20.3	103.9 (2014)	12.0	14.9	71.3	75.2
Equatorial Guinea	0.9	68.2	79.1 (2015)	7.3	24.0	57.9	95.3
Eritrea	5.4	34.1	49.6 (2015)	7.3	22.0	64.2	73.8
Ethiopia	101.9	41.4	100.1 (2014)	5.7	38.8	64.6	49.1
Gabon	1.8	36.1	142 (2011)	18.5	17.1	64.9	83.2
Gambia, The	2.1	47.9	91.6 (2015)	29.7	9.4	60.5	55.6
Ghana	28.0	42.8	109.9 (2015)	5.8	12.7	61.5	76.6
Guinea	12.9	61.0	91.3 (2014)	6.8	21.9	59.2	30.4
Guinea-Bissau	1.9	60.3	113.7 (2010)	6.5	13.7	55.5	59.9
Kenya	47.3	35.5	109 (2015)	11.0	19.4	62.2	78.0
Lesotho	2.2	69.2	105.5 (2015)	27.4	25.0	50.1	79.4
Liberia	4.6	52.8	93.9 (2015)	4.0	12.3	61.2	47.6
Libya	6.3	11.4	114.5 (2006)	19.2	16.0	71.8	91.0
Madagascar	24.9	35.9	148.9 (2015)	2.1	19.2	65.5	64.7
Malawi	17.7	43.4	145.5 (2015)	6.7	16.7	63.9	65.8
Mali	18.1	74.5	75.8 (2015)	8.1	8.8	58.5	38.7
Mauritania	4.2	65.1	102.5 (2015)	11.7	25.2	63.2	52.1
Mauritius	1.3	11.8	103 (2015)	7.8	11.6	74.6	90.6
Morocco	34.8	23.7	114.7 (2015)	10.0	20.5	74.3	72.4
Mozambique	28.8	56.7	105.8 (2015)	24.4	39.6	55.5	58.8
Namibia	2.5	32.8	111.4 (2013)	25.6	41.3	65.1	81.9
Niger	20.7	57.1	72.5 (2015)	2.6	17.0	61.9	19.1
Nigeria	187.0	69.4	93.7 (2013)	5.0	5.6	53.1	59.6
Rwanda	11.9	31.1	133.6 (2014)	2.5	61.3	64.8	70.5
Sao Tome and Principe	0.2	34.6	113.6 (2015)	13.6	18.2	66.6	74.9
Senegal	15.6	41.7	82.2 (2015)	9.5	42.7	66.9	55.7
Seychelles	0.1	11.7	102.3 (2015)	...	21.2	73.3	...
Sierra Leone	6.6	87.1	127.6 (2015)	3.0	12.4	51.3	48.1
Somalia	11.1	85.0	29.2 (2007)	6.6	24.4	55.7	...
South Africa	55.0	33.6	99.7 (2014)	25.9	42.1	57.7	94.3
South Sudan	12.7	60.3	64.1 (2015)	...	28.5	56.1	31.9
Sudan	41.2	47.6	70.4 (2013)	13.3	30.5	63.7	75.9
Swaziland	1.3	44.5	112.8 (2014)	25.3	6.2	48.9	87.5
Tanzania	55.2	35.2	81.7 (2015)	2.6	36.4	65.5	80.3
Togo	7.5	52.3	121.8 (2015)	6.8	17.6	60.2	66.6
Tunisia	11.4	12.1	114.2 (2015)	14.8	31.3	75.0	81.8
Uganda	40.3	37.7	101.1 (2015)	2.3	34.3	59.2	73.9
Zambia	16.7	43.3	103.7 (2013)	7.5	18.0	60.8	63.4
Zimbabwe	16.0	46.6	99.9 (2013)	5.1	32.6	59.2	86.5

INTRA-AFRICAN EXPORT

Intra African export (2015, USD million)

	AMU	CEN-SAD	COMESA	EAC	ECCAS	ECOWAS	IGAD	SADC	World
AMU	3,599	4,986	1,849	14	360	1,204	276	217	82,499
CEN-SAD	3,823	16,260	5,040	1,694	2,858	11,491	2,293	6,143	175,347
COMESA	1,765	4,926	8,889	2,695	2,562	365	3,925	7,850	72,831
EAC	43	1,538	3,879	2,731	1,611	95	2,175	2,019	14,504
ECCAS	56	829	1,959	105	1,188	401	75	3,030	66,251
ECOWAS	289	10,605	307	27	1,826	10,024	30	4,789	92,491
IGAD	56	2,116	3,056	2,005	958	74	2,648	1,169	17,105
SADC	534	3,752	13,437	2,262	4,072	1,619	1,676	30,620	146,344

Intra-African exports between RECs (millions USD, UNCTAD 2015)
Color of link represents the exporting REC



AMU (Arab Maghreb Union), CEN-SAD (Community of Sahel-Saharan States), COMESA (Common Market for Eastern and Southern Africa), EAC (East African Community), ECCAS (Economic Community of Central African States), ECOWAS (Economic Community of West African States), IGAD (Intergovernmental Authority on Development), SADC (Southern African Development Community)

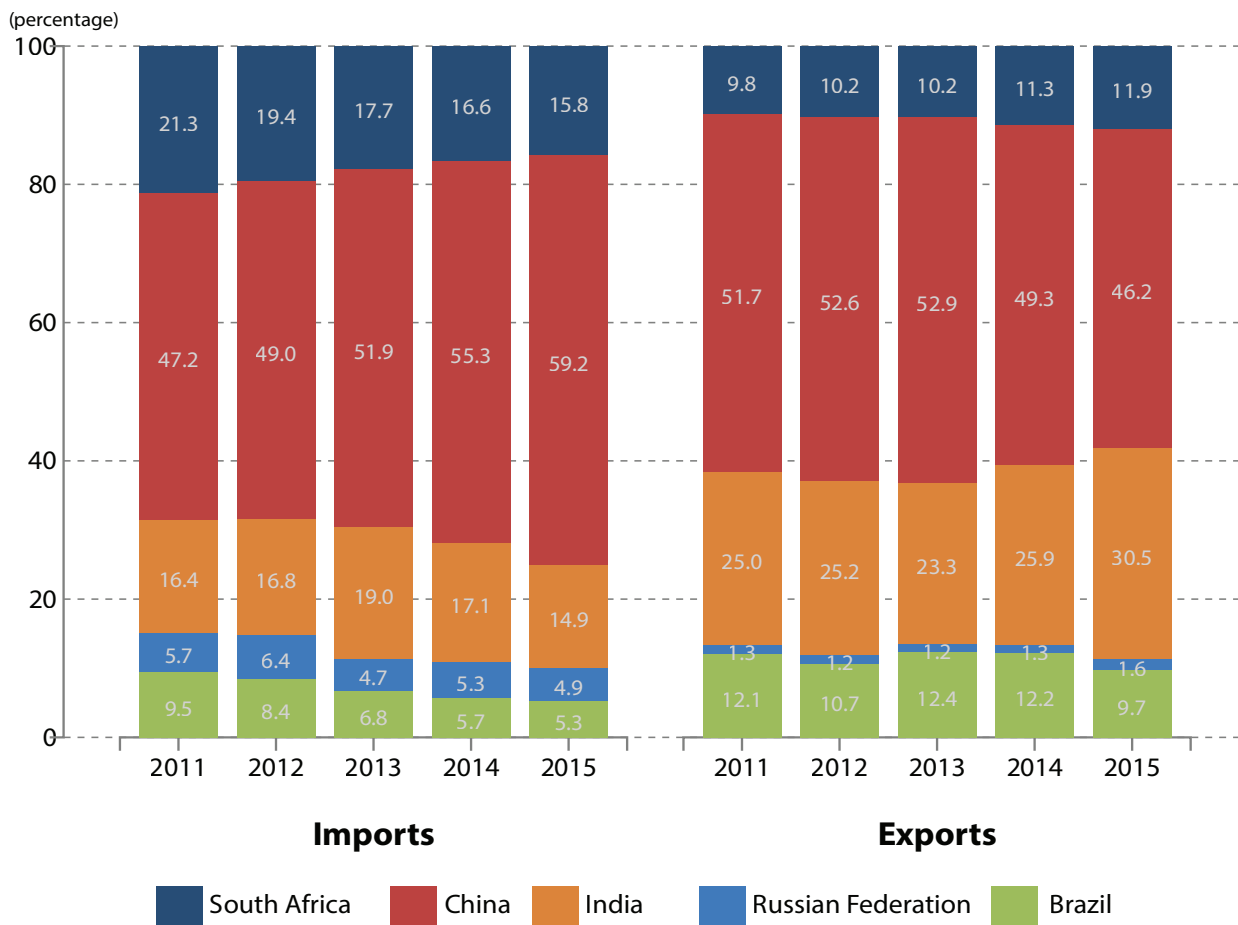
AFRICA'S TRADE WITH BRICS

Import from BRICS (USD million)

Country	2011	2012	2013	2014	2015
Brazil	13,001	13,280	11,299	10,310	8,822
Russian Federation	7,806	10,071	7,735	9,513	8,115
India	22,433	26,433	31,438	30,806	24,957
China	64,718	77,121	86,048	99,617	98,881
South Africa	29,145	30,600	29,357	29,812	26,334
Total	137,103	157,505	165,877	180,058	167,109

Export to BRICS (USD million)

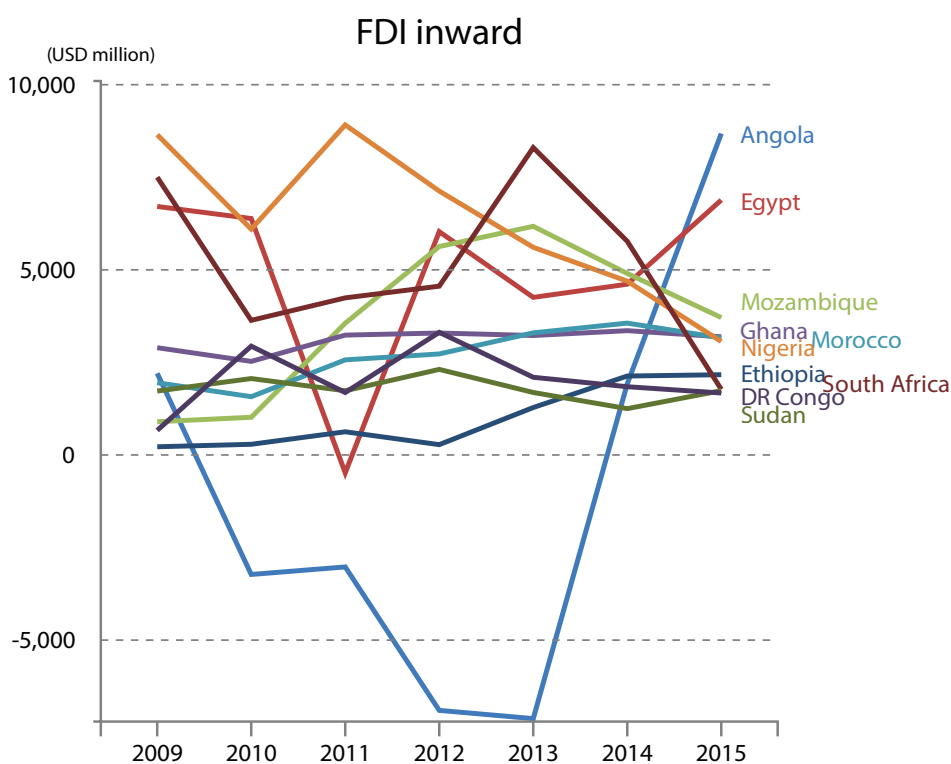
Country	2011	2012	2013	2014	2015
Brazil	16,507	15,272	17,295	16,713	8,667
Russian Federation	1,832	1,690	1,672	1,712	1,463
India	34,149	35,885	32,599	35,377	27,135
China	70,466	74,892	73,876	67,289	41,180
South Africa	13,382	14,545	14,318	15,503	10,597
Total	136,336	142,284	139,760	136,594	89,042



FOREGIN DIRECT INVESTMENT & OFFICIAL DEVELOPMENT ASSITANCE

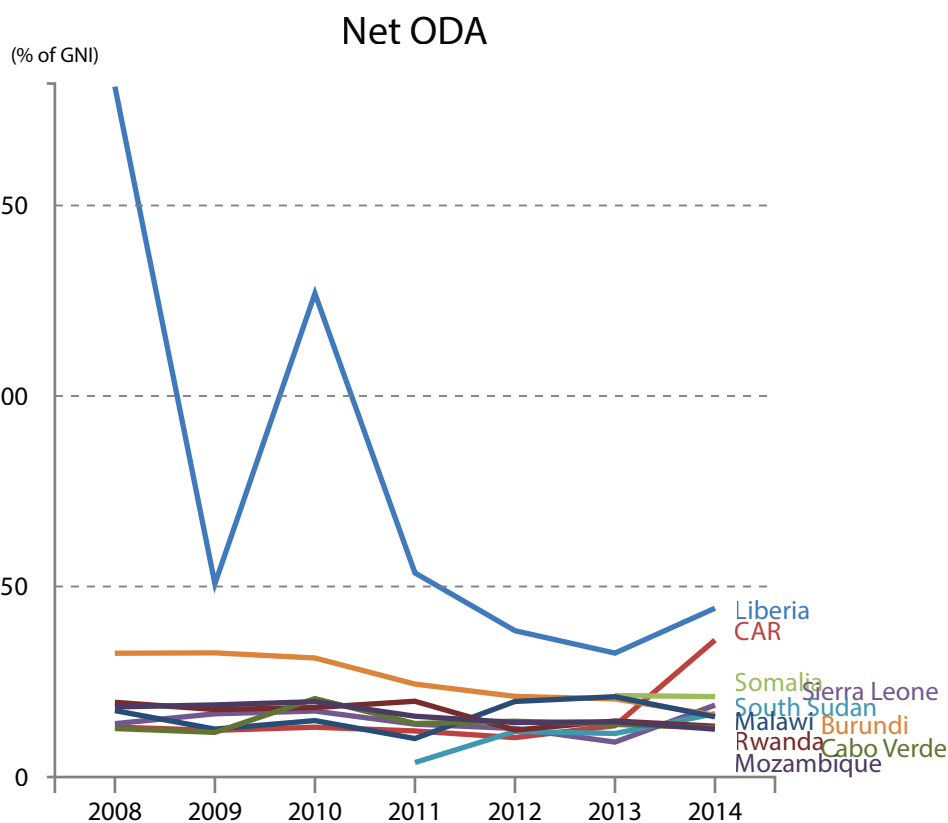
Top 10 FDI inward flow (USD million)

Country	2015
Angola	8,680.9
Egypt	6,885.0
Mozambique	3,710.8
Ghana	3,192.3
Morocco	3,162.3
Nigeria	3,064.2
Ethiopia	2,167.6
South Africa	1,772.4
Sudan	1,736.8
DR Congo	1,673.5
Africa total	54,079



Top 10 ODA recipients (as % of GNI)

Country	2014
Liberia	44.3
Central African Republic	35.9
Somalia	21.1
Sierra Leone	18.9
South Sudan	16.6
Burundi	16.2
Malawi	15.8
Rwanda	13.3
Cabo Verde	12.9
Mozambique	12.6



NOTE

Superscript #	Note
1	Excluding Somalia
2	Excluding South Sudan
3	Excluding Somalia and Liberia
4	Excluding Somalia, Libya and Liberia
5	Excluding Central Africa Republic, Equatorial Guinea, Chad, Comoros, Djibouti, Eritrea, Ethiopia, Somalia, South Sudan, Tanzania, Lesotho, Sierra Leone and Sudan
6	Excluding Eritrea (from 2012), Ethiopia, Somalia, South Sudan (2011), Mauritania (from 2013), Libya (2015), Tunisia (2015), Malawi (2015), Ghana (from 2014), Gambia (2015) and Liberia (2015)
7	Excluding Equatorial Guinea, Djibouti, Somalia, South Sudan, Seychelles, Libya, Tunisia (2014) and Namibia
8	Excluding Equatorial Guinea for Central Africa
9	Excluding Somalia for Eastern Africa
10	Excluding Comoros, Djibouti, Eritrea, Ethiopia, Somalia, South Sudan and Tanzania for Eastern Africa
11	Excluding Eritrea (from 2012), Ethiopia, Somalia and South Sudan (2011) for Eastern Africa
12	Excluding Djibouti, Somalia, South Sudan and Seychelles for Eastern Africa
13	Excluding Libya for North Africa
14	Excluding Sudan for North Africa
15	Excluding Mauritania (from 2013), Libya (2015) and Tunisia (2015) for North Africa
16	Excluding Libya and Tunisia (2014) for North Africa
17	Excluding Malawi for Southern Africa
18	Excluding Namibia for Souther Africa
19	Excluding Liberia for West Africa
20	Excluding Seirra Leone for West Africa
21	Excluding Ghana (from 2014), Gambia (2015) and Liberia (2015) for West Africa
22	Excluding Zimbabwe
23	Excluding Somalia, South Sudan (2011), Sudan (2011) and Zimbabwe (2015)
24	Excluding Central Africa Republic, Equatorial Guinea and Chad for Eastern Africa
25	Exluding Lesotho for Southern Africa

SOURCE LIST

Page #	Indicator	Source
Page 1-2	GDP per capita; Real GDP growth; Inflation; Contribution of sectors to GDP	Statistics Botswana
	Gross investment; Gross saving; Current account balance; Inward FDI inflow	International Monetary Fund
	External debt; Debt service ratio;	World Bank, International Debt Statistics
	Inward FDI inflow	United Nations Conference on Trade and Development
Page 1, 3	Export and import	COMTRADE
Page 4-6	GDP PPP; Inflation	International Monetary Fund
	GDP per capita; General govt. net lending/borrowin; Total investment; Gross national saving; Current account balance	International Monetary Fund World Economic Outlook Database
	Real GDP growth; Share of industry; Share of manufacturing	United Nations Statistics Division
	International reserve; Total external debt; GNI	World Bank
	Real export growth; Trade balance; Share of Africa's export; Terms of trade index; FDI	United Nations Conference on Trade and Development
Page 7-9	GDP; Inflation; Total investment; Trade balance	International Monetary Fund
	Debt service ratio	World Bank
	GDP by sector; Infant mortality; Seats held by women in parliament	United Nations Statistics Division
	Population; Life expectancy	United Nations Population Division
	Gross enrolment ratio; Adult literacy	United Nations Educational, Scientific and Cultural Organization
	Unemployment	International Labour Organization
Page 10	Intra-African Exports	United Nations Conference on Trade and Development
Page 11	Africa's trade with BRICS	United Nations Conference on Trade and Development
Page 12	FDI	United Nations Conference on Trade and Development
	Net ODA	World Bank

The logo features a white silhouette of the African continent on a blue background. To the right of the map, the word "AFRICA" is written in bold, blue, uppercase letters within a white rectangular box. Below this, the word "FIRST" is written in large, bold, white, uppercase letters on the blue background.

AFRICA FIRST

This report is prepared by the African Centre for Statistics of the Economic Commission for Africa.

The designations employed and the presentation of material in this publication do not imply the expression of any opinion whatsoever on the part of the United Nations concerning the legal status of any country, territory, city or area or of its authorities, or concerning the delimitation of its frontiers or boundaries. Where the designation "country or area" appears in the headings of tables, it covers countries, territories, cities or areas.

For more information Contact:
African Centre for Statistics
Economic Commission for Africa
P.O.Box 3001
Addis Ababa
Ethiopia
Tel.: +251-11-544 3050
Email: Statistics@uneca.org
Web: www.uneca.org