



# Africa Statistics Flash

Selected Socio-Economic Indicators on Africa

February 2017



United Nations  
Economic Commission for Africa

# TABLE OF CONTENTS

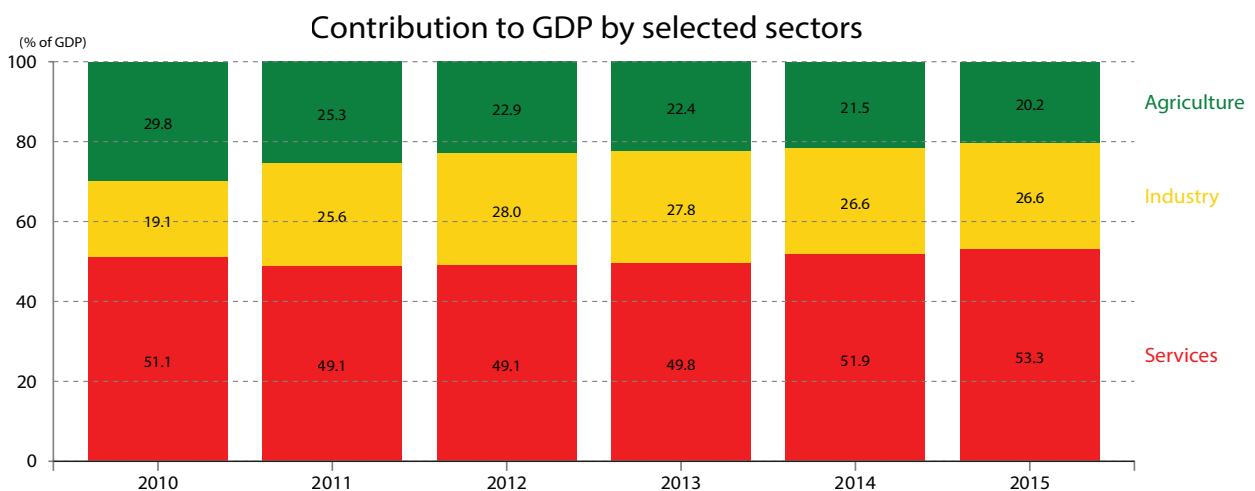
COUNTRY FOCUS: GHANA .....	1
AFRICA: KEY MACROECONOMIC INDICATORS .....	4
SUBREGION: KEY MACROECONOMIC INDICATORS .....	5
COUNTRY: KEY MACROECONOMIC INDICATORS .....	6
COUNTRY: CHANGE IN SECTORAL COMPOSITION OF GDP .....	7
COUNTRY: KEY SOCIAL INDICATORS .....	8
INTRA-AFRICAN EXPORT .....	10
AFRICA'S TRADE WITH BRICS .....	11
FOREIGN DIRECT INVESTMENT & OFFICIAL DEVELOPMENT ASSISTANCE .....	12
NOTE .....	13
SOURCE LIST .....	14

## COUNTRY FOCUS: GHANA

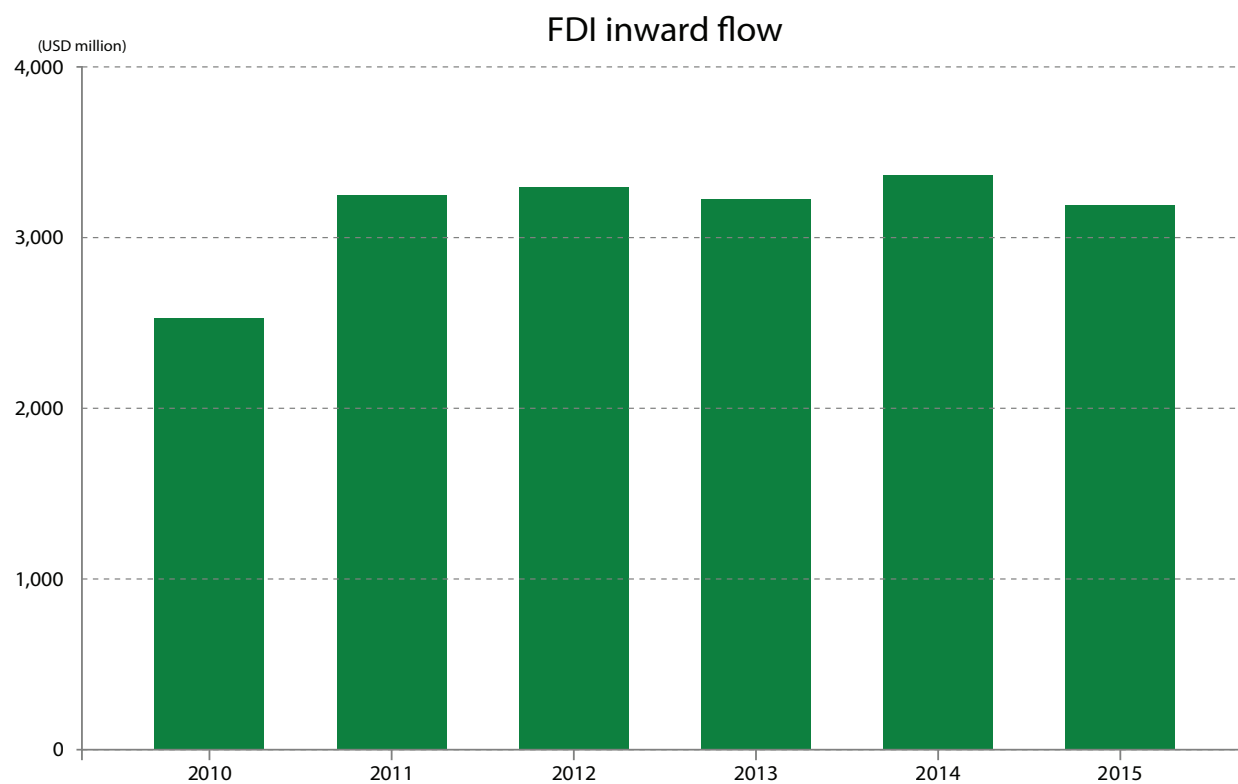
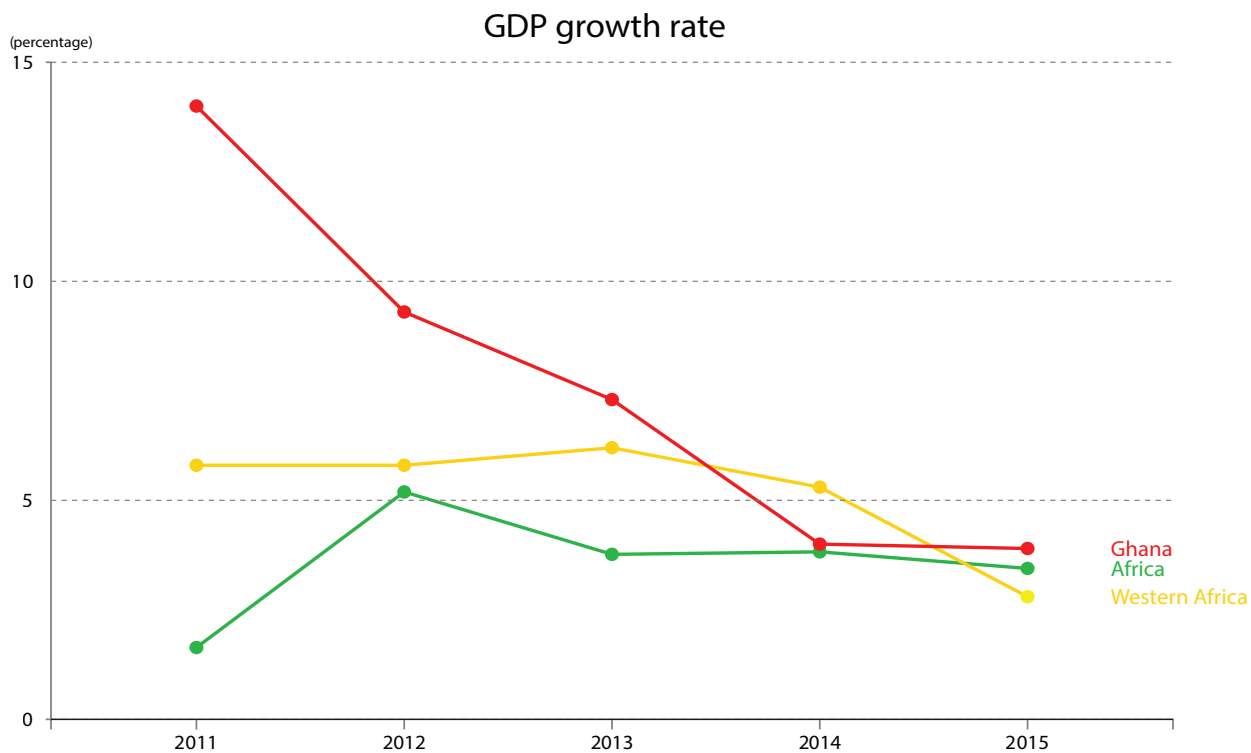
Ghana key macroeconomic indicators

Indicators	2011	2012	2013	2014	2015	2016
GDP at current, (USD million)	11,996	9,189	8,745	3,878	2,442(r)	8,629(p)
GDP per capita (USD)	1,472	1,570	1,645	1,6471	1,697	...
Real GDP growth (%)	14.0	9.3	7.3	4.0	3.9	...
Inflation (annual, %)	8.7	9.2	11.8	15.5	17.1	17.5
Gross investment (% of GDP)	26.4	31.8	27.7	27.1	24.6	...
Gross saving (% of GDP)	17.5	20.0	15.7	18.5	17.0	...
Current account balance incl. official transfer (% of GDP)	-9.0	-11.7	-11.9	-9.6	-7.5	...
External debt (% of GDP)	29.3	32.2	35.8	49.8	56.3	...
Share of industry (% of GDP)	25.6	28.0	27.8	26.6	26.6	...
(of which manufacturing)	6.9	5.8	5.3	4.9	5.1	...
Debt service ratio (% of export)	2.4	3.2	6.1	5.4	6.2	...

(r): revised; (p): provisional



## COUNTRY FOCUS: GHANA



## COUNTRY FOCUS: GHANA

### Top 5 export products (USD million)

Product	2010	2011	2012	2013	2014	2015
Gold	1,001	1,049	3,388	3,071	2,966	3,489
Cocoa	4,163	4,071	3,659	2,507	2,902	2,263
Petroleum oils	...	3,486	3,563	3,877	3,522	1,715
Fruits and nuts (excluding oil nuts)	274	631	343	523	346	303
Ores and concentrates of base metals	392	449	293	268	227	140
<b>Total (of the top 5)</b>	<b>5,830</b>	<b>9,686</b>	<b>11,246</b>	<b>10,246</b>	<b>9,963</b>	<b>7,910</b>
<b>Total</b>	<b>7,960</b>	<b>12,785</b>	<b>13,552</b>	<b>12,644</b>	<b>12,152</b>	<b>9,521</b>

### Top 5 import products (USD million)

Product	2010	2011	2012	2013	2014	2015
Petroleum oils crude	820	1,373	1,075	1,042	1,461	886
Petroleum oils >70% oil	427	694	1,097	1,036	1,025	704
Motor vehicles for transport persons	408	692	750	790	585	624
Ships, boats & floating structures	565	51	602	1,225	328	556
Motor vehicles for transport goods	288	633	647	486	556	549
<b>Total (of the top 5)</b>	<b>2,508</b>	<b>3,443</b>	<b>4,171</b>	<b>4,579</b>	<b>3,955</b>	<b>3,319</b>
<b>Total</b>	<b>10,922</b>	<b>15,838</b>	<b>17,763</b>	<b>17,600</b>	<b>14,600</b>	<b>13,465</b>

### Top 5 export destinations (USD million)

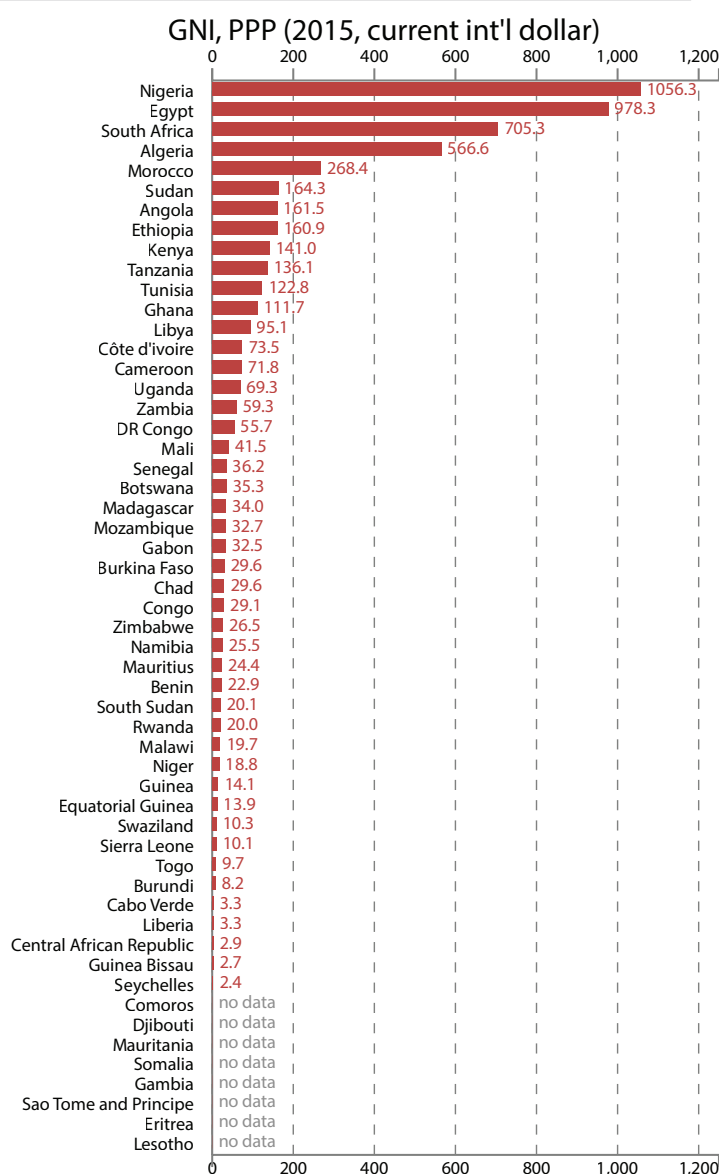
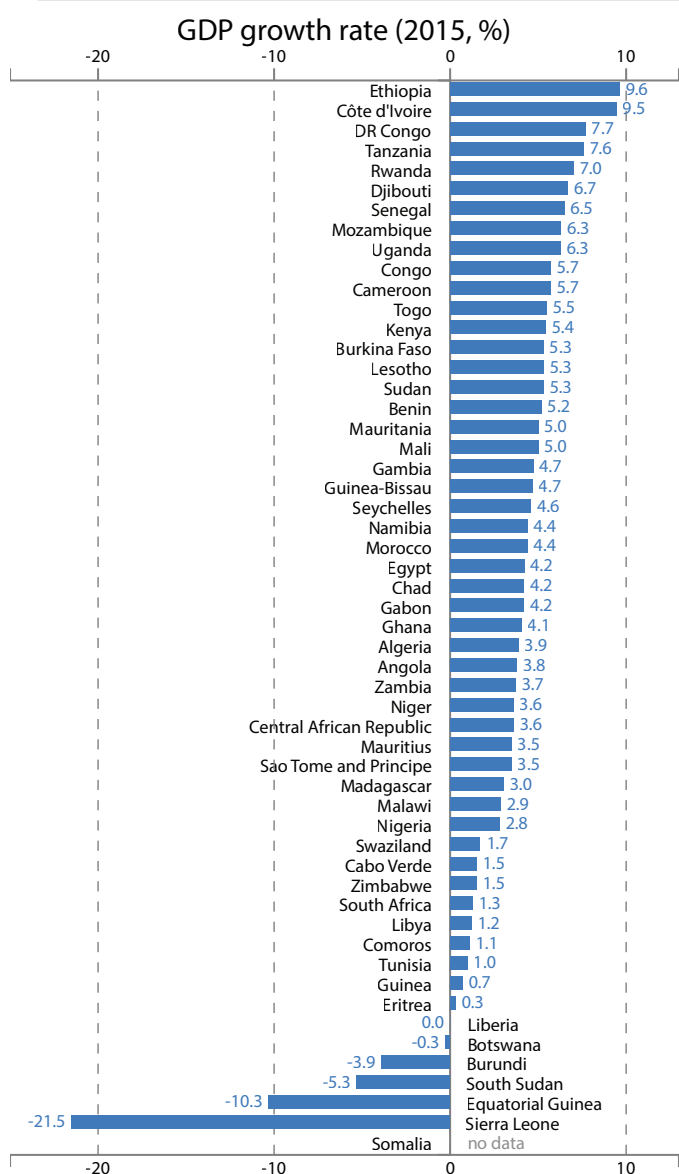
Country	2010	2011	2012	2013	2014	2015
India	248	561	352	322	697	2,204
Switzerland	209	209	2,044	1,892	1,676	1,188
China	205	454	832	975	1,140	946
France	487	2,307	1,570	1,229	1,072	656
Netherlands	938	1,181	986	773	796	448
<b>Total (of the top 5)</b>	<b>2,087</b>	<b>4,712</b>	<b>5,784</b>	<b>5,191</b>	<b>5,381</b>	<b>5,442</b>
<b>Total</b>	<b>7,960</b>	<b>12,785</b>	<b>13,552</b>	<b>12,644</b>	<b>12,152</b>	<b>9,521</b>

### Top 5 import origins (USD million)

Country	2010	2011	2012	2013	2014	2015
China	1,787	3,069	4,199	3,642	3,805	3,235
Nigeria	913	1,494	1,478	1,533	1,959	1,511
Netherlands	426	866	1,230	1,113	1,461	1,132
United States	1,053	1,317	1,379	1,080	1,086	952
Côte d'Ivoire	634	265	363	1,489	422	620
<b>Total (of the top 5)</b>	<b>4,813</b>	<b>7,011</b>	<b>8,649</b>	<b>8,857</b>	<b>8,733</b>	<b>7,450</b>
<b>Total</b>	<b>10,922</b>	<b>15,838</b>	<b>17,763</b>	<b>17,600</b>	<b>14,600</b>	<b>13,465</b>

## AFRICA: KEY MACROECONOMIC INDICATORS

Indicators	2011	2012	2013	2014	2015
GDP, PPP (current international \$ billion) <sup>1</sup>	4,720	5,034	5,304	5,577	5,819
GDP per capita (current, USD) <sup>1</sup>	2,087	2,171	2,199	2,209	1,966
Real GDP growth (%)	1.6	5.2	3.8	3.8	3.4
Inflation (annual, growth rate) <sup>1</sup>	9.0 <sup>2</sup>	8.6	6.4	7.1	7.0
General govt. net lending/borrowing (% of GDP)	-3.2	-3.2	-5.0	-6.3	-7.4
Total investment (% of GDP) <sup>3</sup>	22.2	22.6	22.6	23.2	23.0
Gross national saving (% of GDP) <sup>4</sup>	21.6	20.3	19.6	19.0	16.4
Real export growth (%)	0.3	19.5	-0.7	0.0	2.1
Trade balance (% of GDP)	2.0	1.0	-0.8	-3.3	-6.8
Share of Africa's export (%)	3.1	3.2	3.0	2.7	2.4
Terms of trade index (2000=100)	185.6	191.7	188.0	180.4	153.7
Current account balance (% of GDP) <sup>23</sup>	-0.3	-0.7	-2.3	-4.5	-7.0
FDI (inward flow; USD million)	47,786 <sup>2</sup>	55,156	52,154	58,300	54,079
FDI (outward flow; USD million) <sup>5</sup>	6,122	12,386	15,543	15,163	11,325
International reserve (USD billion) <sup>6</sup>	532.3	575.0	571.3	508.5	351.8
Total external debt (% of GNI) <sup>7</sup>	20.4	21.8	22.4	21.8	...
Share of industry (% of GDP) <sup>1</sup>	33.3	33.4	32.3	31.9	30.1
(of which manufacturing) <sup>1</sup>	10.4	10.2	10.4	10.8	11.0



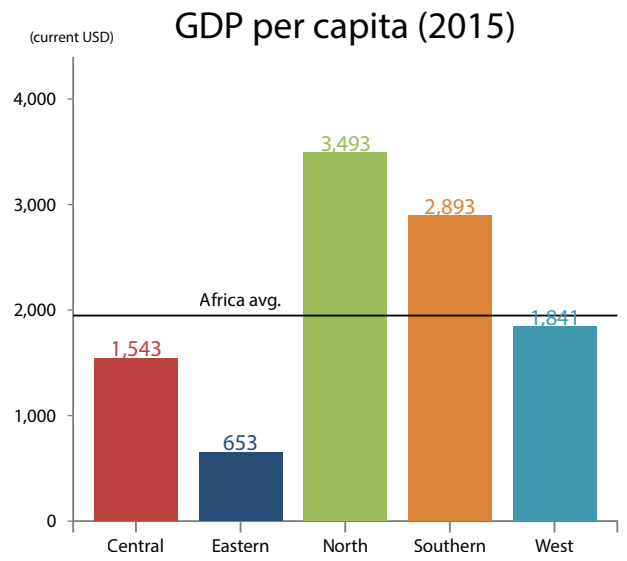
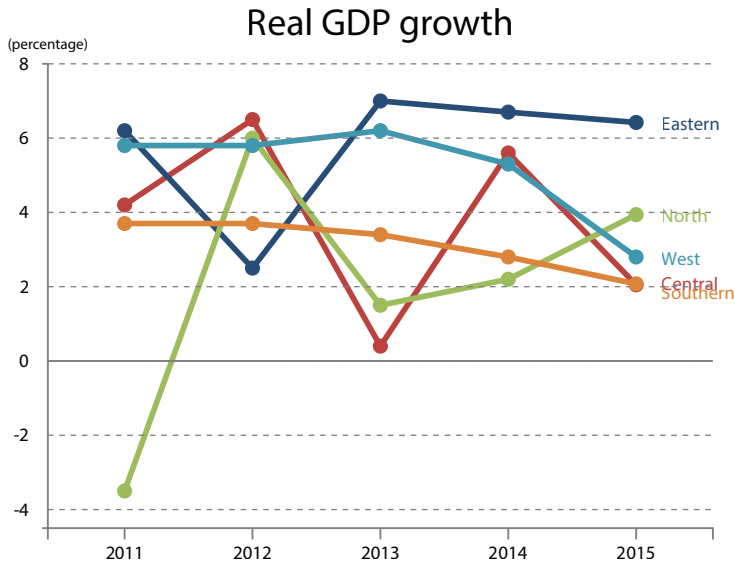
## SUBREGION: KEY MACROECONOMIC INDICATORS

Indicators	Central Africa					Eastern Africa				
	2011	2012	2013	2014	2015	2011	2012	2013	2014	2015
Real GDP growth (%)	4.2	6.5	0.4	5.6	2.1	6.2	2.5	7.0	6.7	6.4
GDP per capita (current, USD) <sup>9</sup>	2,107	2,030	2,028	2,032	1,543	558 <sup>2</sup>	617	668	710	673
Inflation (annual, %) <sup>9</sup>	2.8	4.3	2.2	2.4	3.0	18.8	15.2	5.9	5.7	8.6
Gen. govt. net lend/borrow (% of GDP)	2.3	-0.9	-2.9	-4.0	-5.5	-2.4	-3.2	-3.4	-3.9	-3.7
Total investment (% of GDP) <sup>9</sup>	29.8	29.1	30.3	32.1	31.3	24.7	25.9	25.3	25.7	27.4
Gross national saving (% of GDP) <sup>9</sup>	27.2	26.5	24.7	25.6	20.3	19.5	17.8	16.7	17.2	18.0
Current account balance (% of GDP) <sup>9</sup>	1.8	-0.3	-1.9	-4.5	-7.8	-7.7	-8.5	-8.2	-8.7	-10.2
FDI inward flow (USD million)	5,557	5,381	5,511	6,742	3,678	6,155 <sup>2</sup>	8,614	8,067	9,439	9,475
FDI outward flow (USD million) <sup>10,24</sup>	-129	-22	-293	-132	-148	96	500	389	416	733
International reserve (USD billion) <sup>11</sup>	15.2	17.0	17.7	14.9	9.5	15.2	18.8	20.4	20.8	19.1
Total external debt (% of GDP) <sup>12</sup>	17.4	18.9	23.7	23.2	...	26.0	24.3	25.7	26.5	...
Share of industry (% of GDP) <sup>1</sup>	57.8	57.4	54.7	52.8	46.5	23.7	21.9	22.4	23.0	22.9
(of which manufacturing)	7.6	7.6	8.1	8.6	11.3	9.3	9.1	8.8	8.3	8.3

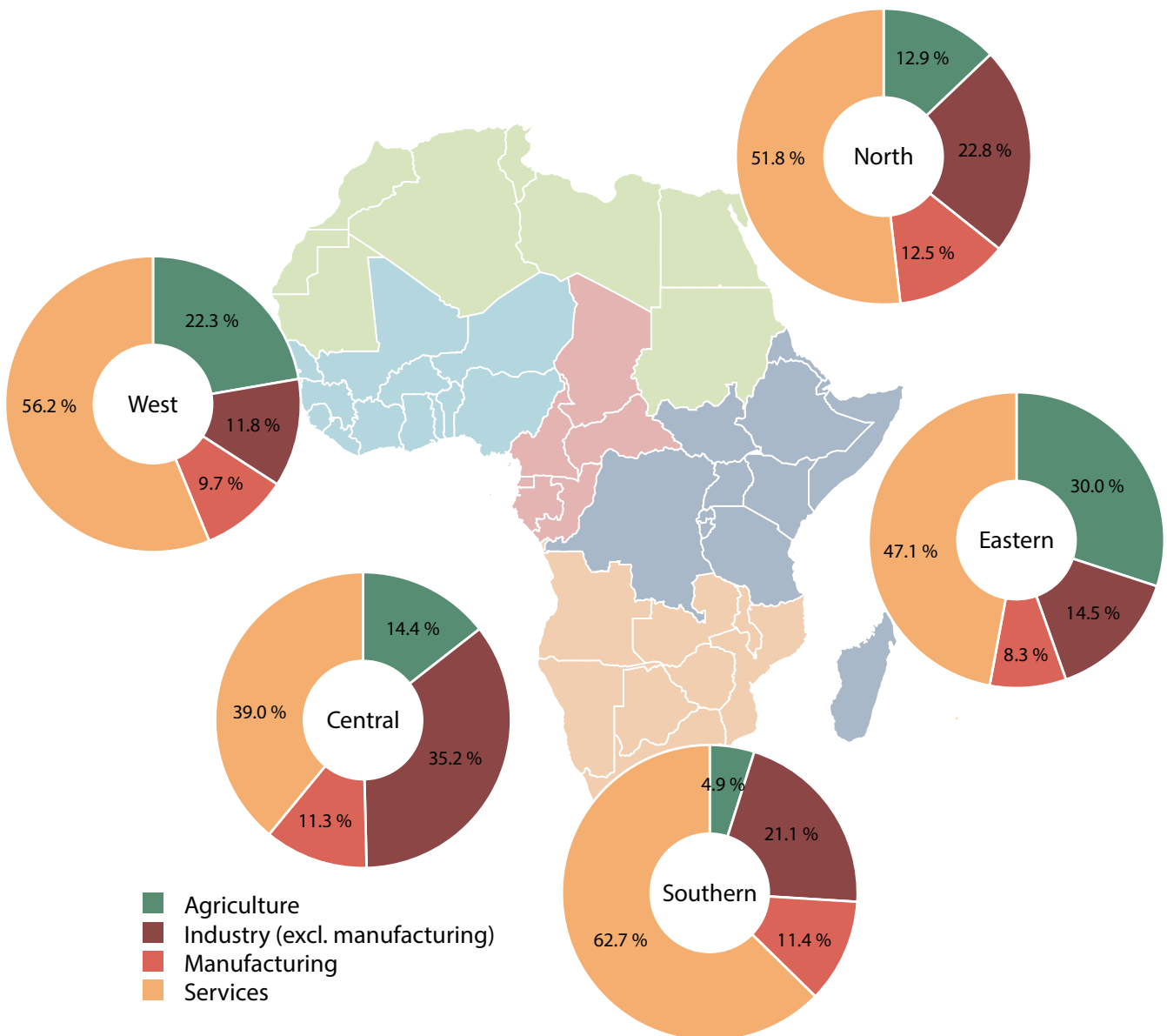
Indicators	North Africa					Southern Africa				
	2011	2012	2013	2014	2015	2011	2012	2013	2014	2015
Real GDP growth (%)	-3.5	6.0	1.5	2.2	3.9	3.7	3.7	3.4	2.8	2.1
GDP per capita (current, USD)	3,440	3,705	3,670	3,645	3,493	3,748	3,650	3,491	3,365	2,893
Inflation (annual, %)	9.8	11.2	10.4	13.3	10.8	6.5	6.4	6.4	6.2	5.7
Gen. govt. net lend/borrow (% of GDP)	-5.9	-4.9	-7.5	-10.3	-12.3	-1.8	-2.3	-3.2	-4.2	-4.2
Total investment (% of GDP)	24.9	24.9	25.4	26.2	27.0	19.8	21.0	21.2	21.4	19.2
Gross national saving (% of GDP)	25.4	23.1	22.7	22.8	19.8	18.6	17.8	16.8	16.2	13.1
Current account balance (% of GDP)	1.0 <sup>14</sup>	1.6	-2.1	-5.2	-9.3	-0.6	-2.4	-3.5	-5.1	-6.2 <sup>22</sup>
FDI inward flow (USD million)	8,137	16,987	13,880	12,544	13,419	9,570	8,690	11,329	17,959	18,108
FDI outward flow (USD million) <sup>14,25</sup>	1,492	3,100	405	800	1,846	2,083	5,306	12,837	11,862	6,878
International reserve (USD billion) <sup>15</sup>	349.4	368.2	364.5	323.1	189.6	97.5	105.1	104.0	99.7	90.5 <sup>17</sup>
Total external debt (% of GDP) <sup>16,18</sup>	18.5	19.7	20.5	16.9	...	28.7	34.8	36.1	38.9	...
Share of industry (% of GDP)	39.1	40.4	39.2	38.8	35.3	34.7	34.5	33.6	33.8	32.5
(of which manufacturing)	12.6	12.0	12.1	12.7	12.5	11.9	11.6	11.6	11.6	11.4

Indicators	West Africa					Africa				
	2011	2012	2013	2014	2015	2011	2012	2013	2014	2015
Real GDP growth (%)	5.8	5.8	6.2	5.3	2.8	1.6	5.2	3.8	3.8	3.4
GDP per capita (current, USD)	1,801	1,927	2,093	2,184	1,841	2,087	2,171	2,199	2,209	1,966
Inflation (annual, %)	6.0	4.6	2.6	1.6	2.3	9.0	8.6	6.4	7.1	7.0
Gen. govt. net lend/borrow (% of GDP)	-0.9	-1.3	-3.3	-3.1	-4.2	-3.2	-3.2	-5.0	-6.3	-7.4
Total investment (% of GDP) <sup>19</sup>	17.7	17.5	17.1	17.6	16.6	22.2	22.6	22.6	23.2	23.0
Gross national saving (% of GDP) <sup>19</sup>	18.3	18.1	17.6	15.6	12.8	21.6	20.3	19.6	19.0	16.4
Current account balance (% of GDP)	0.6	1.1	0.7	-1.6	-3.6	-0.3	-0.7	-2.3	-4.5	-7.0
FDI inward flow (USD million)	18,367	15,485	13,368	11,615	9,399	47,786	55,156	52,154	58,300	54,079
FDI outward flow (USD million) <sup>20</sup>	2,580	3,502	2,206	2,216	2,015	6,122	12,386	15,543	15,163	11,325
International reserve (USD billion) <sup>21</sup>	55.0	65.8	64.7	50.0	43.1	532.3	575.0	571.3	508.5	351.8
Total external debt (% of GDP)	12.0	10.7	11.1	11.2	...	20.4	21.8	22.4	21.8	...
Share of industry (% of GDP)	25.5	24.9	24.0	23.3	21.5	33.3	33.4	32.3	31.9	30.1
(of which manufacturing)	7.4	7.7	8.5	9.0	9.7	10.4	10.2	10.4	10.8	11.0

## SUBREGION: KEY MACROECONOMIC INDICATORS



### Sectoral share of GDP (2015)





## COUNTRY: KEY MACROECONOMIC INDICATORS

Country	GDP at current (2015, bil. int'l \$)	Inflation (2015, %)	Total investment (2015, % of GDP)	Trade balance (2015, % of GDP)	Debt service ratio (% of exports)
Algeria	578.7	4.8	50.3	-7.4	0.4 (2014)
Angola	184.4	10.3	9.3	8.4	10.7 (2014)
Benin	22.9	0.3	27.8	-12.2	5.1 (2013)
Botswana	34.8	3.0	27.8	-5.7	2.3 (2013)
Burkina Faso	30.9	0.9	14.2	-9.9	2.8 (2013)
Burundi	7.7	5.6	10.6	-20.9	13.7 (2013)
Cabo Verde	3.4	0.1	40.7	-35.0	4.8 (2014)
Cameroon	72.6	2.7	21.8	-9.5	2.7 (2013)
Central African Republic	3.0	5.4	14.5	3.6	...
Chad	30.5	3.6	27.1	3.0	...
Comoros	1.2	2.0	18.4	-37.5	0.7 (2014)
Congo	29.4	3.2	33.4	-17.8	...
Côte d'Ivoire	78.6	1.2	18.2	3.9	11.6 (2014)
DR Congo	62.9	1.0	15.6	1.8	3.1 (2014)
Djibouti	3.1	2.1	60.4	-35.7	6.1 (2014)
Egypt	1,047.9	11.0	14.0	-13.7	12.7 (2014)
Equatorial Guinea	25.4	0.1	54.4	3.5	...
Eritrea	8.7	9.0	7.6	-11.0	...
Ethiopia	161.6	10.1	39.8	-36.7	7.2 (2012)
Gabon	34.6	2.0	37.8	22.9	...
Gambia, The	3.3	17.2	19.8	-32.3	7.1 (2012)
Ghana	114.7	8.2	23.9	-8.8	5.1 (2014)
Guinea	15.0	1.5	10.2	3.2	4.2 (2013)
Guinea-Bissau	2.7	7.7	11.2	0.3	0.3 (2013)
Kenya	141.9	6.6	22.5	-16.5	11.0 (2014)
Lesotho	5.8	4.8	29.8	-61.3	2.8 (2013)
Liberia	3.7	1.4	...	-89.2	0.7 (2013)
Libya	92.6	8.0	31.6	-20.0	...
Madagascar	35.4	7.4	17.1	-6.8	2.5 (2013)
Malawi	20.4	21.9	12.0	-20.2	4.2 (2014)
Mali	35.8	1.0	24.0	-5.5	3.0 (2013)
Mauritania	16.3	0.5	35.6	-11.2	5.6 (2013)
Mauritius	24.6	1.3	25.5	-20.2	26.8 (2014)
Morocco	273.5	1.6	33.3	-15.6	15.1 (2014)
Mozambique	33.2	2.4	28.2	-35.1	2.6 (2013)
Namibia	25.3	3.4	29.4	-28.5	...
Niger	19.1	9.0	42.1	-20.1	2.5 (2013)
Nigeria	1,091.7	0.1	14.5	0.6	0.8 (2014)
Rwanda	20.4	2.5	25.0	-19.1	3.4 (2013)
Sao Tome and Principe	0.7	5.3	26.2	-41.1	15.1 (2014)
Senegal	36.7	9.0	25.3	-21.4	8.9 (2013)
Seychelles	2.4	4.0	31.8	-36.1	...
Sierra Leone	10.0	6.8	16.3	-26.4	1.2 (2013)
Somalia	...	...	...	...	...
South Africa	723.5	4.6	19.5	-2.8	8.6 (2014)
South Sudan	23.7	52.8	9.9	...	...
Sudan	167.0	16.9	17.3	-6.0	4.4 (2014)
Swaziland	10.8	5.0	10.9	4.2	1.3 (2014)
Tanzania	138.5	5.6	31.3	-10.7	1.9 (2013)
Togo	10.8	1.8	24.2	-21.9	2.2 (2013)
Tunisia	127.0	4.9	21.8	-14.2	8.7 (2014)
Uganda	79.9	5.8	26.5	-14.4	2.1 (2014)
Zambia	62.7	10.1	34.6	-6.8	3.7 (2014)
Zimbabwe	28.1	-2.4	13.0	...	...

## COUNTRY: CHANGE IN SECTORAL COMPOSITION OF GDP

Country	Agriculture (% of GDP)		Industry (% of GDP)		(Manufacturing, % of GDP)		Services (% of GDP)	
	2011	2015	2011	2015	2011	2015	2011	2015
Algeria	8.3	12.2	50.5	37.3	3.7	4.5	41.2	50.5
Angola	5.4	6.8	60.3	51.2	3.8	4.6	34.3	42.0
Benin	25.2	23.2	23.9	24.9	14.7	15.7	50.9	51.9
Botswana	2.7	2.4	40.2	33.4	6.3	6.3	57.0	64.2
Burkina Faso	33.7	34.5	27.0	21.8	7.7	6.7	39.2	43.7
Burundi	38.8	36.3	17.6	13.9	12.5	9.1	43.6	49.8
Cabo Verde	9.1	9.5	20.6	19.8	6.3	6.5	70.3	70.7
Cameroon	23.4	22.7	29.4	28.3	14.6	13.9	47.2	49.1
Central African Republic	42.3	34.9	24.0	24.8	18.3	20.2	33.7	40.4
Chad	22.8	25.4	45.8	39.0	7.8	10.1	31.4	35.6
Comoros	37.7	30.7	11.1	4.0	5.8	1.6	51.1	65.3
Congo	3.6	4.7	78.6	70.0	3.5	4.8	17.7	25.3
Côte d'Ivoire	28.3	23.7	26.4	28.3	14.5	16.9	45.3	48.1
DR Congo	22.0	19.9	43.1	44.2	16.2	17.3	34.9	35.9
Djibouti	3.5	3.3	17.8	21.4	3.3	2.3	78.7	75.3
Egypt	14.5	11.2	37.6	36.3	16.5	16.6	48.0	52.5
Equatorial Guinea	1.4	1.2	95.5	73.1	0.1	18.7	3.1	25.7
Eritrea	17.0	17.2	24.1	23.5	6.1	6.0	58.9	59.3
Ethiopia	44.4	40.5	10.4	16.0	4.0	4.0	45.2	43.5
Gabon	3.8	3.8	60.4	54.5	5.8	6.5	35.8	41.7
Gambia, The	23.6	21.1	14.7	14.9	5.8	5.1	61.7	64.0
Ghana	25.3	19.0	25.6	26.9	6.9	4.7	49.1	54.1
Guinea	20.2	19.8	43.8	32.8	7.2	10.8	36.0	47.4
Guinea-Bissau	45.6	45.0	13.4	14.5	11.3	12.7	41.0	40.5
Kenya	28.5	32.0	20.5	19.0	12.7	11.0	51.0	49.0
Lesotho	8.4	7.7	32.5	31.3	11.6	10.4	59.1	61.0
Liberia	70.0	70.8	11.4	11.4	5.7	5.8	18.6	17.9
Libya	1.7	0.9	50.5	67.1	2.0	3.7	47.9	32.0
Madagascar	27.8	24.9	19.4	18.4	14.3	13.8	52.7	56.7
Malawi	31.2	26.1	16.7	16.6	10.9	9.4	52.0	57.3
Mali	39.1	39.9	22.1	19.6	6.3	13.8	38.8	40.5
Mauritania	20.3	20.9	46.9	41.7	6.8	8.2	32.9	37.4
Mauritius	3.6	2.9	25.8	22.7	16.9	16.1	70.6	74.4
Morocco	14.2	13.7	28.9	28.9	16.8	17.2	56.9	57.4
Mozambique	27.8	24.6	18.8	21.0	10.9	9.8	53.4	54.4
Namibia	8.8	6.6	29.7	30.6	14.6	8.9	61.5	62.8
Niger	41.5	39.6	17.3	19.1	5.2	6.2	41.2	41.3
Nigeria	22.3	20.9	28.3	20.4	7.2	9.5	49.4	58.8
Rwanda	34.7	34.6	15.4	15.1	5.7	5.1	49.9	50.3
Sao Tome and Principe	22.9	12.3	12.9	14.7	4.6	6.4	64.2	73.0
Senegal	14.6	15.5	24.7	24.1	14.6	13.7	60.6	60.4
Seychelles	2.6	2.7	16.3	13.6	8.7	6.4	81.1	83.8
Sierra Leone	56.1	51.4	8.1	17.6	2.3	1.8	35.8	31.1
Somalia	60.2	60.2	7.4	7.4	2.5	2.5	32.5	32.5
South Africa	2.5	2.4	29.9	28.9	13.3	13.2	67.5	68.7
South Sudan	4.5	4.6	62.2	58.0	2.8	2.3	33.3	37.4
Sudan	27.7	32.4	27.3	20.1	9.7	8.5	45.0	47.6
Swaziland	6.6	6.6	44.2	42.1	38.3	35.6	49.2	51.3
Tanzania	30.9	29.6	24.0	23.0	8.1	6.5	45.0	47.4
Togo	46.6	45.7	18.5	19.7	8.3	6.9	34.9	34.6
Tunisia	8.9	10.3	31.0	27.8	17.3	16.6	60.1	62.0
Uganda	28.4	25.6	22.8	21.5	11.8	9.2	48.7	52.9
Zambia	9.9	8.2	35.0	32.3	7.9	8.4	55.1	59.5
Zimbabwe	13.1	13.0	32.5	30.5	13.9	12.7	54.4	56.5

## COUNTRY: KEY SOCIO-DEMOGRAPHIC INDICATORS

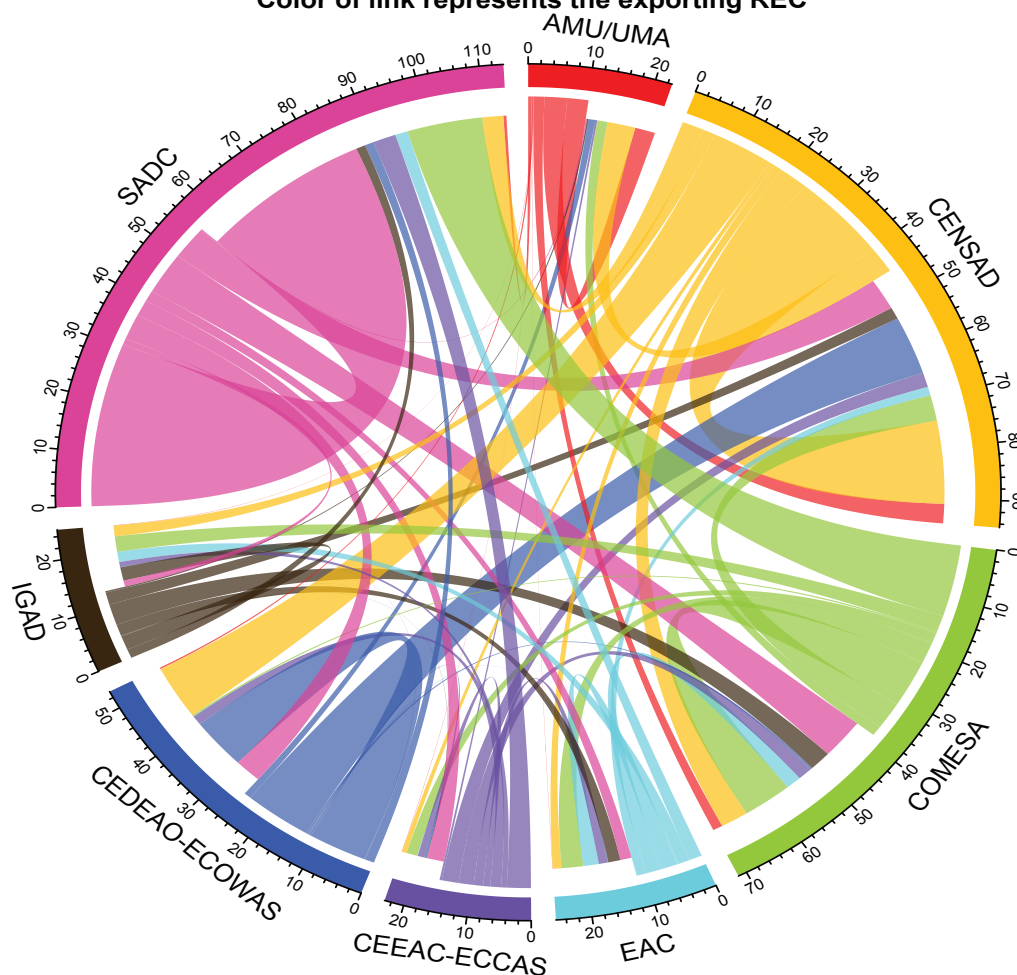
Country	Population (2016, million)	Infant mortality (2015, per 1,000)	Gross enrol. ratio, primary	Unemployment (2016, %)	Seats held by women in parli. (2016, %)	Life expectancy (2015)	Adult literacy (2015, %)
Algeria	40.4	21.9	116.2 (2015)	11.2	31.6	75.0	80.2
Angola	25.8	96.0	128.7 (2011)	6.6	38.2	52.7	71.1
Benin	11.2	64.2	129 (2015)	1.0	7.2	59.8	38.5
Botswana	2.3	34.8	108.6 (2013)	18.4	9.5	64.5	88.5
Burkina Faso	18.6	60.9	88 (2015)	3.0	11.0	59.0	36.0
Burundi	11.6	54.1	123.8 (2015)	1.6	36.4	57.1	85.6
Cabo Verde	0.5	20.7	109.9 (2015)	10.5	23.6	73.5	87.6
Cameroon	23.9	57.1	117.1 (2015)	4.5	31.1	56.0	75.0
Central African Republic	5.0	91.5	93.5 (2012)	6.9	8.6	51.5	36.8
Chad	14.5	85.0	101.4 (2013)	5.8	12.8	51.9	40.2
Comoros	0.8	55.1	103.2 (2014)	20.0	6.1	63.6	77.8
Congo	4.7	33.2	110.9 (2012)	11.2	7.4	62.9	79.3
Côte d'Ivoire	23.3	66.6	93.6 (2015)	9.3	10.6	51.9	43.1
DR Congo	79.7	74.5	107 (2014)	3.6	8.9	59.1	...
Djibouti	0.9	54.2	66.3 (2015)	6.6	10.8	62.3	...
Egypt	93.4	20.3	103.9 (2014)	12.0	14.9	71.3	75.2
Equatorial Guinea	0.9	68.2	79.1 (2015)	7.3	24.0	57.9	95.3
Eritrea	5.4	34.1	49.6 (2015)	7.3	22.0	64.2	73.8
Ethiopia	101.9	41.4	100.1 (2014)	5.7	38.8	64.6	49.1
Gabon	1.8	36.1	142 (2011)	18.5	17.1	64.9	83.2
Gambia, The	2.1	47.9	91.6 (2015)	29.7	9.4	60.5	55.6
Ghana	28.0	42.8	109.9 (2015)	5.8	12.7	61.5	76.6
Guinea	12.9	61.0	91.3 (2014)	6.8	21.9	59.2	30.4
Guinea-Bissau	1.9	60.3	113.7 (2010)	6.5	13.7	55.5	59.9
Kenya	47.3	35.5	109 (2015)	11.0	19.4	62.2	78.0
Lesotho	2.2	69.2	105.5 (2015)	27.4	25.0	50.1	79.4
Liberia	4.6	52.8	93.9 (2015)	4.0	12.3	61.2	47.6
Libya	6.3	11.4	114.5 (2006)	19.2	16.0	71.8	91.0
Madagascar	24.9	35.9	148.9 (2015)	2.1	19.2	65.5	64.7
Malawi	17.7	43.4	145.5 (2015)	6.7	16.7	63.9	65.8
Mali	18.1	74.5	75.8 (2015)	8.1	8.8	58.5	38.7
Mauritania	4.2	65.1	102.5 (2015)	11.7	25.2	63.2	52.1
Mauritius	1.3	11.8	103 (2015)	7.8	11.6	74.6	90.6
Morocco	34.8	23.7	114.7 (2015)	10.0	20.5	74.3	72.4
Mozambique	28.8	56.7	105.8 (2015)	24.4	39.6	55.5	58.8
Namibia	2.5	32.8	111.4 (2013)	25.6	41.3	65.1	81.9
Niger	20.7	57.1	72.5 (2015)	2.6	17.0	61.9	19.1
Nigeria	187.0	69.4	93.7 (2013)	5.0	5.6	53.1	59.6
Rwanda	11.9	31.1	133.6 (2014)	2.5	61.3	64.8	70.5
Sao Tome and Principe	0.2	34.6	113.6 (2015)	13.6	18.2	66.6	74.9
Senegal	15.6	41.7	82.2 (2015)	9.5	42.7	66.9	55.7
Seychelles	0.1	11.7	102.3 (2015)	...	21.2	73.3	...
Sierra Leone	6.6	87.1	127.6 (2015)	3.0	12.4	51.3	48.1
Somalia	11.1	85.0	29.2 (2007)	6.6	24.4	55.7	...
South Africa	55.0	33.6	99.7 (2014)	25.9	42.1	57.7	94.3
South Sudan	12.7	60.3	64.1 (2015)	...	28.5	56.1	31.9
Sudan	41.2	47.6	70.4 (2013)	13.3	30.5	63.7	75.9
Swaziland	1.3	44.5	112.8 (2014)	25.3	6.2	48.9	87.5
Tanzania	55.2	35.2	81.7 (2015)	2.6	36.4	65.5	80.3
Togo	7.5	52.3	121.8 (2015)	6.8	17.6	60.2	66.6
Tunisia	11.4	12.1	114.2 (2015)	14.8	31.3	75.0	81.8
Uganda	40.3	37.7	101.1 (2015)	2.3	34.3	59.2	73.9
Zambia	16.7	43.3	103.7 (2013)	7.5	18.0	60.8	63.4
Zimbabwe	16.0	46.6	99.9 (2013)	5.1	32.6	59.2	86.5

## INTRA-AFRICAN EXPORT

Intra African export (2015, USD million)

	AMU	CEN-SAD	COMESA	EAC	ECCAS	ECOWAS	IGAD	SADC	World
<b>AMU</b>	3,599	4,986	1,849	14	360	1,204	276	217	82,499
<b>CEN-SAD</b>	3,823	16,260	5,040	1,694	2,858	11,491	2,293	6,143	175,347
<b>COMESA</b>	1,765	4,926	8,889	2,695	2,562	365	3,925	7,850	72,831
<b>EAC</b>	43	1,538	3,879	2,731	1,611	95	2,175	2,019	14,504
<b>ECCAS</b>	56	829	1,959	105	1,188	401	75	3,030	66,251
<b>ECOWAS</b>	289	10,605	307	27	1,826	10,024	30	4,789	92,491
<b>IGAD</b>	56	2,116	3,056	2,005	958	74	2,648	1,169	17,105
<b>SADC</b>	534	3,752	13,437	2,262	4,072	1,619	1,676	30,620	146,344

Intra-African exports between RECs (millions USD, UNCTAD 2015)  
Color of link represents the exporting REC



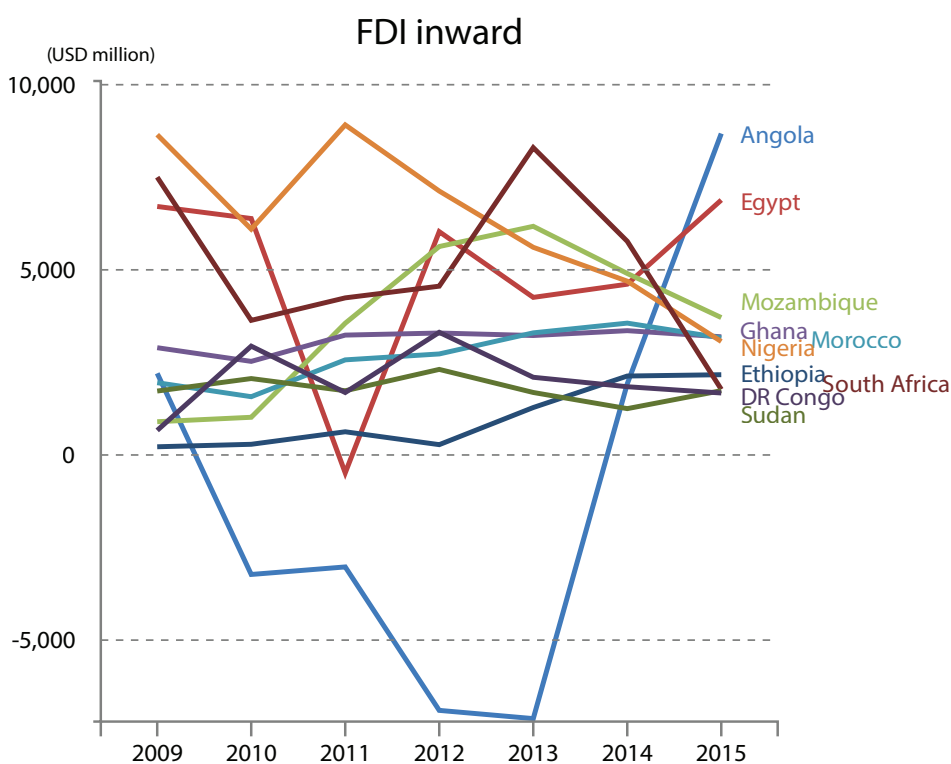
AMU (Arab Maghreb Union), CEN-SAD (Community of Sahel-Saharan States), COMESA (Common Market for Eastern and Southern Africa), EAC (East African Community), ECCAS (Economic Community of Central African States), ECOWAS (Economic Community of West African States), IGAD (Intergovernmental Authority on Development), SADC (Southern African Development Community)



## FOREGIN DIRECT INVESTMENT & OFFICIAL DEVELOPMENT ASSITANCE

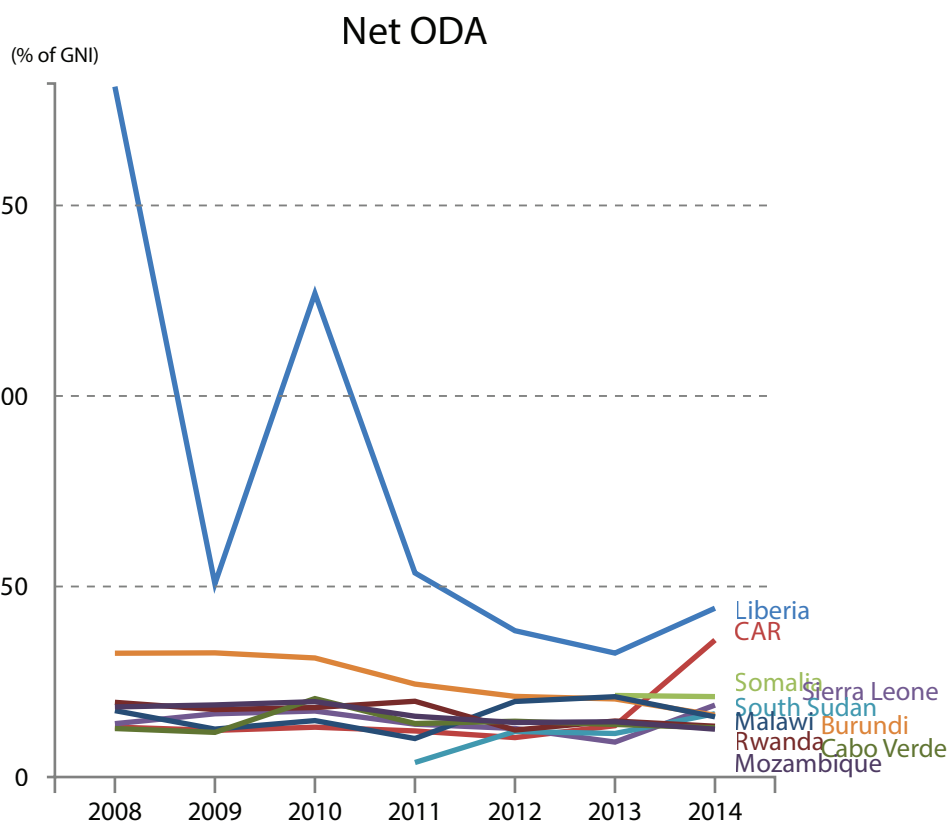
**Top 10 FDI inward flow (USD million)**

Country	2015
Angola	8,680.9
Egypt	6,885.0
Mozambique	3,710.8
Ghana	3,192.3
Morocco	3,162.3
Nigeria	3,064.2
Ethiopia	2,167.6
South Africa	1,772.4
Sudan	1,736.8
DR Congo	1,673.5
<b>Africa total</b>	<b>54,079</b>



**Top 10 ODA recipients (as % of GNI)**

Country	2014
Liberia	44.3
Central African Republic	35.9
Somalia	21.1
Sierra Leone	18.9
South Sudan	16.6
Burundi	16.2
Malawi	15.8
Rwanda	13.3
Cabo Verde	12.9
Mozambique	12.6



## NOTE

Superscript #	Note
1	Excluding Somalia
2	Excluding South Sudan
3	Excluding Somalia and Liberia
4	Excluding Somalia, Libya and Liberia
5	Excluding Central Africa Republic, Equatorial Guinea, Chad, Comoros, Djibouti, Eritrea, Ethiopia, Somalia, South Sudan, Tanzania, Lesotho, Sierra Leone and Sudan
6	Excluding Eritrea (from 2012), Ethiopia, Somalia, South Sudan (2011), Mauritania (from 2013), Libya (2015), Tunisia (2015), Malawi (2015), Ghana (from 2014), Gambia (2015) and Liberia (2015)
7	Excluding Equatorial Guinea, Djibouti, Somalia, South Sudan, Seychelles, Libya, Tunisia (2014) and Namibia
8	Excluding Equatorial Guinea for Central Africa
9	Excluding Somalia for Eastern Africa
10	Excluding Comoros, Djibouti, Eritrea, Ethiopia, Somalia, South Sudan and Tanzania for Eastern Africa
11	Excluding Eritrea (from 2012), Ethiopia, Somalia and South Sudan (2011) for Eastern Africa
12	Excluding Djibouti, Somalia, South Sudan and Seychelles for Eastern Africa
13	Excluding Libya for North Africa
14	Excluding Sudan for North Africa
15	Excluding Mauritania (from 2013), Libya (2015) and Tunisia (2015) for North Africa
16	Excluding Libya and Tunisia (2014) for North Africa
17	Excluding Malawi for Southern Africa
18	Excluding Namibia for Southern Africa
19	Excluding Liberia for West Africa
20	Excluding Sierra Leone for West Africa
21	Excluding Ghana (from 2014), Gambia (2015) and Liberia (2015) for West Africa
22	Excluding Zimbabwe
23	Excluding Somalia, South Sudan (2011), Sudan (2011) and Zimbabwe (2015)
24	Excluding Central Africa Republic, Equatorial Guinea and Chad for Eastern Africa
25	Excluding Lesotho for Southern Africa

## SOURCE LIST

Page #	Indicator	Source
Page 1-2	GDP at current; Real GDP growth; Inflation; Contribution of sectors to GDP	Ghana Statistical Service GDP Bulletin
	GDP per capita; Gross investment; Gross saving; Current account balance; External debt; Debt service ratio; Inward FDI inflow	World Bank
Page 1, 3	Export and import	United Nations Conference on Trade and Development
Page 4-6	GDP PPP; Inflation	International Monetary Fund
	GDP per capita; General govt. net lending/borrowin; Total investment; Gross national saving; Current account balance	International Monetary Fund World Economic Outlook Database
	Real GDP growth; Share of industry; Share of manufacturing	United Nations Statistics Division
	International reserve; Total external debt; GNI	World Bank
	Real export growth; Trade balance; Share of Africa's export; Terms of trade index; FDI	United Nations Conference on Trade and Development
Page 7-9	GDP; Inflation; Total investment; Trade balance	International Monetary Fund
	Debt service ratio	World Bank
	GDP by sector; Infant mortality; Seats held by women in parliament	United Nations Statistics Division
	Population; Life expectancy	United Nations Population Division
	Gross enrolment ratio; Adult literacy	United Nations Educational, Scientific and Cultural Organization
	Unemployment	International Labour Organization
Page 10	Intra-African Exports	United Nations Conference on Trade and Development
Page 11	Africa's trade with BRICS	United Nations Conference on Trade and Development
Page 12	FDI	United Nations Conference on Trade and Development
	Net ODA	World Bank



The logo features a white silhouette of the African continent on the left. To its right, the word "AFRICA" is written in bold, blue, uppercase letters within a white rectangular box. Below this, the word "FIRST" is written in large, bold, white, uppercase letters against the blue background.

# AFRICA FIRST

This report is prepared by the African Centre for Statistics of the Economic Commission for Africa.

The designations employed and the presentation of material in this publication do not imply the expression of any opinion whatsoever on the part of the United Nations concerning the legal status of any country, territory, city or area or of its authorities, or concerning the delimitation of its frontiers or boundaries. Where the designation "country or area" appears in the headings of tables, it covers countries, territories, cities or areas.

For more information Contact:  
African Centre for Statistics  
Economic Commission for Africa  
P.O.Box 3001  
Addis Ababa  
Ethiopia  
Tel.: +251-11-544 3050  
Email: [Statistics@uneca.org](mailto:Statistics@uneca.org)  
Web: [www.uneca.org](http://www.uneca.org)