

# **WISER approach to provision of climate information services**

**24/10/2019,**

**Rainbow Towers Hotel, Harare, Zimbabwe**

John Mungai

# Outline

- **Background/ Overview of WISER**
- **Examples of approaches in the provision of CIS**

# Background of WISER

- Weather and Climate Information Services for Africa (WISER) is a programme funded by the UK government's Department for International Development (DFID) and managed by the UK Met Office.
- Implementation period 2016 - 2020
- WISER's mission is to deliver **transformational change** in the quality, accessibility and use of weather and climate information services at all levels of decision making for sustainable development in Africa.
- Too often, climate information and services are not user-centric and their potential to impact decision making and planning at multiple levels, remains limited.

# Components of WISER

## Programmes

Fund Manager

ACP°C  
African Climate Policy Centre

£10m

A Policy and Enabling Environment Component (PEEC) focussing on improved governance for weather and climate services across Africa.

An East Africa programme aimed at improving the quality and relevance of weather and climate information, and supporting its uptake and use.

Fund Manager

 **Met Office**

£20m

# Overview

Ambitious Targets

Access to  
**improved  
information**  
for...

**30**

Organisations

**3,500,000**

Households



# Principles

## Delivering transformational change

- Focussing on **service delivery** recognising need for **co-produced products and services**
- Supporting climate information providers, users, intermediaries and other collaborators
- Interventions based around suitable regional, national or sub-national plans
- Demonstrating a contribution to delivering **socio-economic benefits**
- **Working in partnership**

# East-Africa programme

- Improving the quality and relevance of weather and climate information and supporting its uptake and use
- Six East Africa regional projects (HIGHWAY, DARAJA, WEATHERWISE, TRANSFORM, AM DAR, W2SIP)
- Six national projects – Kenya, Rwanda, Tanzania, Uganda, South Sudan & Somalia



# Examples of approaches in the provision of CIS



# Weather Wise:

Joining forces to communicate weather and climate information for decision-making



# OBJECTIVE



Strengthen the capacity of media professionals and technical experts to **respond to the climate and weather information needs of farmers, fishermen and pastoralists** living in Northern Kenya, around the Lake Victoria regions of Kenya, Uganda and Tanzania

“I would like to know more about simple affordable farming technologies to deal with severe weather changes that are threatening my livelihood,”

*Farmer, Masaka District*

# FORMATIVE RESEARCH – Objectives

To understand:

- How target audiences are accessing and using climate and weather information, and any barriers they face
- The priorities and needs of target audiences when it comes to climate and weather information
- The opportunities and challenges faced by climate experts in reporting weather and climate information
- The opportunities and challenges faced by journalists in reporting weather and climate information



Radio Listener, Korogocho, Nairobi.

# Key findings

## Target audiences:

- Pastoralists and fishermen trust indigenous climate predictions more than scientific climate predictions.
- Are caught between ceding reliance on indigenous climate forecasting in favour of the scientific approach to predictions that is not well understood.

Turkana County



*“Sometimes the intestines have been wrong, in 2017 the elders predicted it was going to rain but this did not happen”  
Male pastoralist, Turkana.*

# Key findings

- Target audiences want localised, contextualised, reliable weather and climate information that helps them decide what to do next.
- Journalists do not feel confident communicating climate information because of the jargon involved and the attitude of scientists towards them
- Climate scientists Experience challenges translating scientific information into useful data for non-scientific audiences.
- Highly sensitive to the fact that unmoderated dissemination of climate information can result in both political and individual backlash and hence opt to take the ‘middle lane’.



Kotieno Beach, Homa Bay County

Pastoralists listen to the radio:

7-9pm when herders are back from the field

Fishermen listen to radio:

Between 11am 1pm, when on land and not sleep

Farmers listen to radio:

Before 9am, when they go to the farm and 8-9pm when relaxing after work

*“ The forecast is general, it does not have the information that we need. We want to hear a forecast talking about the winds that affect the fishermen, to see the forecaster showing us our islands and what is happening in there, not some map that is not specific to us”. Male fisherman, Uganda.*

# Weather Wise Radio Partners



**BBC**  
**MEDIA ACTION**  
TRANSFORMING LIVES THROUGH MEDIA  
AROUND THE WORLD

Radio Station	Region/County	Frequency	Language
<b>Radio Kaya</b>	Kwale	93.1 FM Mombasa, 99.7 FM Malindi, 94.9 FM Voi	Kiswahili
<b>Maata FM</b>	Turkana	101.9 FM	Turkana
<b>Sifa FM</b>	Marsabit	101.1 FM	Rendille and Kiswahili
<b>Gulf Radio</b>	Homa Bay	88.3 FM	Luo
<b>UBC Star FM</b>	National Broadcaster	87.5 FM	Buganda
<b>Bukedde FM</b>	Lake Regions, Uganda	100.5 FM	Buganda
<b>KBC</b>	National Broadcaster	92.9 FM	Kiswahili
<b>Radio</b>		97.9 FM	Kiswahili





- Audience case studies
- Sms/call logs at radio stations

“I would like to know more about simple affordable farming technologies to deal with severe weather changes that are threatening my livelihood,”

*Farmer, Masaka District*

# Take home point

IN ORDER TO ENHANCE UPTAKE OF CIS CLIMATE SCIENTISTS NEED TO WORK WITH MEDIA AND USERS TO DEVELOP USEFUL WX INFORMATION AND COMMUNICATION PATHWAYS



# MHEWS TANZANIA

Multi Hazard Early Warning Services  
for Tanzania

## Key Outputs

- Impact based forecasting workshops and engagement to define user needs
- Standard Operating Procedures (SOPs) for EWS service delivery developed
- Operational EWS for the coastal regions of Tanzania
- Enhanced national daily forecasts

## Delivery Partners



# MHEWS TANZANIA

Multi Hazard Early Warning Services for Tanzania

## Key Stats

1

new Multi Hazard Early Warning System introduced

45

number of people trained in the development, understanding and use of climate information

5

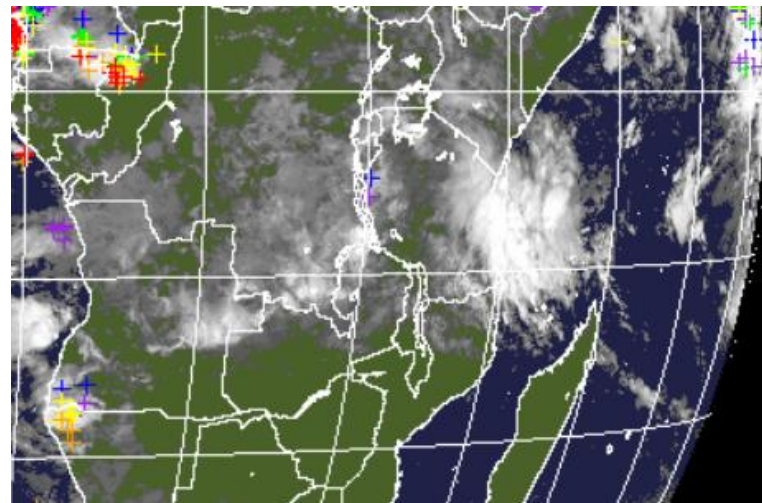
government departments with enhanced access to TMA services

~ 500,000

Households reached with new forecasts

# Output 2: Early Warning Service

To further develop and enhance the MHEWS product, based on insights from output 1, and to deliver a MHEWS to stakeholders within ministries and to end users in the coastal zone of Tanzania.



THE UNITED REPUBLIC OF TANZANIA  
MINISTRY OF WORKS, TRANSPORT AND COMMUNICATION  
TANZANIA METEOROLOGICAL AGENCY

Telegram: "METEO" DAR ES SALAAM  
Telephone: 255 (0) 22 2460706-8  
Telefax: 255 (0) 22 2460735  
E-mail: met@meteo.go.tz  
http://www.meteo.go.tz



P.O. BOX 3056  
DAR ES SALAAM

Our ref: TMA/1622

13<sup>th</sup> April 2018

JAMHURI YA MUUNGANO WA TANZANIA  
WIZARA YA UJENZI, UCHUKUZI NA MAWASILIANO  
MAMLAKA YA HALI YA HEWA TANZANIA

UTABIRI WA HALI YA HEWA KWA SAA 24 ZIJAZO KUANZIA SAA 3.00 USIKU,  
JUMAPILI JANUARI 7, 2018 IMETOLEWA SAA 12-00 JIONI MACHI 20, 2018

**Information to the Public:**  
Heavy rains are expected to persist over Tanga, Dar es Salaam, Pwani, Morogoro, Lindi and Mtwara region: together with Unguja and Pemba isles

Information No.	201804-02
East Africa Time	Issued at 15:00
Category:	Warning
Valid from:	13 <sup>th</sup> April, 2018
Date	13 <sup>th</sup> April, 2018
Valid to:	16 <sup>th</sup> April, 2018
Date	16 <sup>th</sup> April, 2018
Phenomena/Hazard/Disaster	Periods of Heavy rains exceeding 50mm in 24 hours are expected.
Level of Confidence:	High (80%)

**Expected At** Utabiri wa Hali ya Hewa wa Siku Tano na Athari Zinazoweza Kutokea  
Umetolewa Leo Tarehe 13-04-2018 Saa 09:30 Mchana na Mamlaka ya Hali ya Hewa Tanzania

**Text:**

**Advisory:**

**Remarks:**

Issued by  
Tanzania

**Ijumaa 13-04-2018**

**TAHADHARI** ya Mvua Kubwa imetolewa kwa maeneo ya mkoa wa Tanga, Pwani, Dar es Salaam, Morogoro, Lindi na Mtwara pamoja na visiwa vya Unguja na Pemba. Tafadhali **SHUKUKU YA ANZILIZO NA MAFURIKO**

**UWAZEKANO WA KUTOKEA: KUJAWA WASTANI KIWANGO CHA ATHARI ZINAZOWEZA KUTOKEA: KIKUBWA** (Mafuriko kutokoa katika maeneo mengi na kuathiri jamii nzima, kuvurugika kwa usafiri na barabara kulwa kutopitika, hatari ya kupoteza maisha na kuharibika kwa miundombini kutokana na maji kujaa au yanayopita kwa kasi, n.k.)

**TAHADHARI** ya Mvua Kubwa imetolewa kwa maeneo ya mkoa wa Kagera, Mwanza, Geita, Mara, Shinyanga, Simiyu, Kigoma, Tabora na Katavi. Tafadhali **SHUKUKU, TAHADHARI**

**UWAZEKANO WA KUTOKEA: WA WASTANI KIWANGO CHA ATHARI ZINAZOWEZA KUTOKEA: KIKUBWA** (Mafuriko kutokoa katika maeneo mengi na kuathiri jamii nzima, kuvurugika kwa usafiri na barabara kulwa kutopitika, hatari kwa maisha kutokana na maji kujaa au yanayopita kwa kasi, n.k.)

**Jedwali la Kiwango cha Uhakika Dhidi ya Kiwango cha Athari Yanayoweza Kutokea**

A: Angalizo  
T: Tahadhari

Umuhimu	Mkubwa (70% au Zaidi)	A	T	T
	Wa Wastani (Kati ya 30% na 70%)		A	T
	Mbeya (01% au Kilele)			A
		Ndoto	Za Wastani	Kubwa
		Athari		

TAHADHARI KUBWA	
TAHADHARI KUBWA ya Mvua Kubwa imetolewa kwa maeneo ya mkoa wa Dar es Salaam na baadhi ya maeneo ya mkoa wa Pwani, hususani yale yaliyo karibi na Dar es Salaam.	CHUKUA HATUA MARA MOJA
TAHADHARI	
TAHADHARI ya Mvua Kubwa imetolewa kwa baadhi ya maeneo ya mkoa wa Pwani na ale ya Kihimwa cha Unguja.	CHUKUA HATUA
TAHADHARI ya Upepo Mkali na Mawimbi Makubwa imetolewa kwa baadhi ya maeneo ya mkoa wa Kagera, Geita, Mwanza na Mara hususani yale yanayopakana na Ziwa Viktoria.	
ANGALIZO	
ANGALIZO la Upepo Mkali imetolewa kwa baadhi ya maeneo ya mkoa wa Kagera, Geita, Mwanza na Mara hususani yale yaliyo mbali na Ziwa Viktoria.	ZINGATIA NA JIANDAE

**Alama za athari**

Joto Kali	Maporomoko ya Ardhi
Mvua Kubwa	Upepo Mkali
Mafuriko	Mawimbi Makubwa

**Kisafeso cha rangi za Tahadhari**

Chukua tahadhari mara moja
Chukua tahadhari
Zingatia na Jiandae

**IALI YA HEWA KWA SAA 24 ZIJAZO**  
i-mashariki mwa nchi ya Madagascar kinatarajiwa jhi ya maeneo ya mvumbao wa pwani ya Bahari ya y mkali unaoambatana na mawimbi makubwa zivani juka Ziwa Viktoria.

na hali ya mawingu na mvua nyepesi, hususani katika za kesho hali ya mawingu na vipindi vifupi vya jua echi, hususani ukanda wa Pwani ya Bahari ya Hindi

Tanzania Met Agency  
@tma\_services

Following

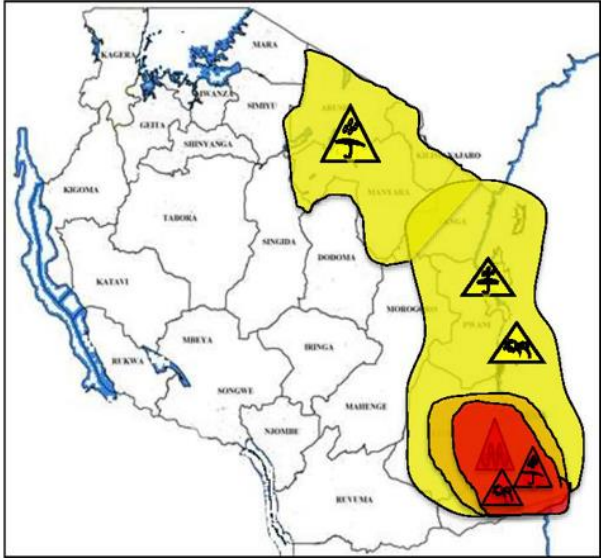
Leo tarehe 15/004/18 Hali ilivyo 1. jangwani, 2. Daraja la kisukuru, 3. Morogoro mjini, 4. Hapo nyumba kuzungukwa na maji ni Mchikichini. Tuambie kwako hali ikoje



# Cyclone Kenneth

## Utabiri wa Hali ya Hewa wa Siku Tano na Athari Zinazoweza Kutokea

Umetolewa Leo Tarehe 25-04-2019 Saa 09:30 Mchana na Mamlaka ya Hali ya Hewa Tanzania



**Alhamisi 25-04-2019**

**TAHADHARI** ya Mvua Kubwa, Upepo Mkali na mawimbi makubwa limetolewa kwa baadhi ya maeneo ya Mikoa ya Lindi na Mtwara.

Tafadhali **CHUKUA HATUA**  
UWEZEKANO WA KUTOKEA: MKUBWA  
KIWANGO CHA ATHARI ZINAZOWEZA KUTOKEA: KUBWA

**ANGALIZO** la Mvua Kubwa, limetolewa kwa baadhi ya maeneo ya Mikoa ya Arusha, Manyara, Kilimanjaro, Pwani, Dar es Salaam, Tanga Pamoja na visiwa vya Unguja na Pemba.

Tafadhali **ZINGATIA NA UJIANDE**

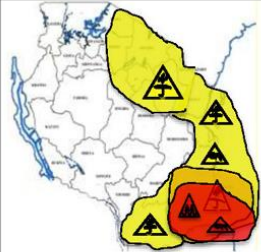
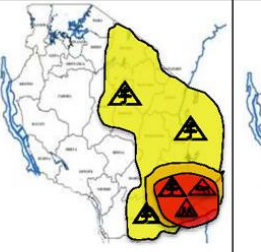
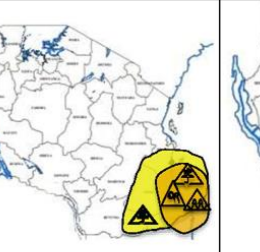
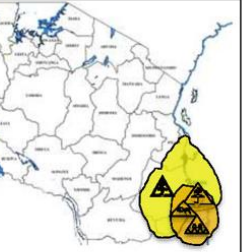
UWEZEKANO WA KUTOKEA: WA WASTANI  
KIWANGO CHA ATHARI ZINAZOWEZA KUTOKEA: CHA WASTANI

(Baadhi ya makazi kuzungukwa na maji, ucheleweshwaji wa usafiri, kusimama kwa muda kwa baadhi ya shughuli za kiuchumi na kijamii Kutawanyishwa/kupeperushwa kwa takataka mitaani, Kuanguka kwa majani na matawi madogomadogo ya miti, kuathirika kwa baadhi ya shughuli za uvuvi na usafiri baharini, ugumu wa upatikanaji wa samaki)

**Alama za Athari**

Joto Kali:		Maporomoko ya Ardhi:	
Mvua Kubwa:		Upepo Mkali:	
Mafuriko:		Mawimbi Makubwa:	

Uwezekano	Mkubwa (70% au Zaidi)	A	T	T
	Wa Wastani (Kati ya 30% na 70%)		A	T
	Mdogo (30% au Kidogo)			A
		Ndogo	Za Wastani	Kubwa
Athari				

			
<p><b>Jumaa 26-04-2019</b></p> <p><b>TAHADHARI</b> ya Mvua Kubwa, Upepo Mkali na mawimbi makubwa limetolewa kwa baadhi ya maeneo ya Mikoa ya Lindi na Mtwara.</p> <p>Tafadhali <b>CHUKUA HATUA</b> UWEZEKANO WA KUTOKEA: MKUBWA KIWANGO CHA ATHARI ZINAZOWEZA KUTOKEA: KUBWA</p> <p><b>ANGALIZO</b> la Mvua Kubwa, limetolewa kwa baadhi ya maeneo ya Mikoa ya Arusha, Manyara, Kilimanjaro, Pwani, Dar es Salaam, Tanga Pamoja na visiwa vya Unguja na Pemba.</p> <p>Tafadhali <b>ZINGATIA NA UJIANDE</b> UWEZEKANO WA KUTOKEA: WASTANI KIWANGO CHA ATHARI ZINAZOWEZA KUTOKEA: WASTANI</p> <p>(Baadhi ya makazi kuzungukwa na maji, ucheleweshwaji wa usafiri, kusimama kwa muda kwa baadhi ya shughuli za kiuchumi na kijamii Kutawanyishwa/kupeperushwa kwa takataka mitaani, Kuanguka kwa majani na matawi madogomadogo ya miti, kuathirika kwa baadhi ya shughuli za uvuvi na usafiri baharini, ugumu wa upatikanaji wa samaki)</p>	<p><b>Jumamosi 27-04-2019</b></p> <p><b>TAHADHARI</b> ya Mvua Kubwa, Upepo Mkali na mawimbi makubwa limetolewa kwa baadhi ya maeneo ya Mikoa ya Lindi na Mtwara.</p> <p>Tafadhali <b>CHUKUA HATUA</b> UWEZEKANO WA KUTOKEA: MKUBWA KIWANGO CHA ATHARI ZINAZOWEZA KUTOKEA: KUBWA</p> <p><b>ANGALIZO</b> la Mvua Kubwa, limetolewa kwa baadhi ya maeneo ya Mikoa ya Ruvuma, Arusha, Manyara, Kilimanjaro, Singida, Dodoma, Morogoro, Pwani, Dar es Salaam, Tanga Pamoja na visiwa vya Unguja na Pemba.</p> <p>Tafadhali <b>ZINGATIA NA UJIANDE</b> UWEZEKANO WA KUTOKEA: WASTANI KIWANGO CHA ATHARI ZINAZOWEZA KUTOKEA: WASTANI</p> <p>(Baadhi ya makazi kuzungukwa na maji, ucheleweshwaji wa usafiri, kusimama kwa muda kwa baadhi ya shughuli za kiuchumi na kijamii Kutawanyishwa/kupeperushwa kwa takataka mitaani, Kuanguka kwa majani na matawi madogomadogo ya miti, kuathirika kwa baadhi ya shughuli za uvuvi na usafiri baharini, ugumu wa upatikanaji wa samaki)</p>	<p><b>Jumapili 28-04-2019</b></p> <p><b>TAHADHARI</b> ya Mvua Kubwa, Upepo Mkali na mawimbi makubwa limetolewa kwa baadhi ya maeneo ya Mikoa ya Lindi na Mtwara.</p> <p>Tafadhali <b>CHUKUA HATUA</b> UWEZEKANO WA KUTOKEA: MKUBWA KIWANGO CHA ATHARI ZINAZOWEZA KUTOKEA: KUBWA</p> <p><b>ANGALIZO</b> la Mvua Kubwa, limetolewa kwa baadhi ya maeneo ya Mikoa ya Pwani, Dar es Salaam na Ruvuma.</p> <p>Tafadhali <b>ZINGATIA NA UJIANDE</b> UWEZEKANO WA KUTOKEA: WASTANI KIWANGO CHA ATHARI ZINAZOWEZA KUTOKEA: WASTANI</p> <p>(Baadhi ya makazi kuzungukwa na maji, ucheleweshwaji wa usafiri, kusimama kwa muda kwa baadhi ya shughuli za kiuchumi na kijamii Kutawanyishwa/kupeperushwa kwa takataka mitaani, Kuanguka kwa majani na matawi madogomadogo ya miti, kuathirika kwa baadhi ya shughuli za uvuvi na usafiri baharini, ugumu wa upatikanaji wa samaki)</p>	<p><b>Jumatatu 29-04-2019</b></p> <p><b>TAHADHARI</b> ya Mvua Kubwa, Upepo Mkali na mawimbi makubwa limetolewa kwa baadhi ya maeneo ya Mikoa ya Lindi na Mtwara.</p> <p>Tafadhali <b>CHUKUA HATUA</b> UWEZEKANO WA KUTOKEA: MKUBWA KIWANGO CHA ATHARI ZINAZOWEZA KUTOKEA: KUBWA</p> <p><b>ANGALIZO</b> la Mvua Kubwa, Upepo Mkali na mawimbi makubwa limetolewa kwa baadhi ya maeneo ya Mikoa ya Dar es Salaam na Pwani.</p> <p>Tafadhali <b>ZINGATIA NA UJIANDE</b> UWEZEKANO WA KUTOKEA: WASTANI KIWANGO CHA ATHARI ZINAZOWEZA KUTOKEA: WASTANI</p> <p>(Baadhi ya makazi kuzungukwa na maji, ucheleweshwaji wa usafiri, kusimama kwa muda kwa baadhi ya shughuli za kiuchumi na kijamii Kutawanyishwa/kupeperushwa kwa takataka mitaani, Kuanguka kwa majani na matawi madogomadogo ya miti, kuathirika kwa baadhi ya shughuli za uvuvi na usafiri baharini, ugumu wa upatikanaji wa samaki)</p>

# Feedback from Users

▫ But the Rapid Bus Transport Project in Dar es Salaam is using the MHEW's products to plan and implement their activities. In rain season like this season they operate in three zones where they put their buses in those zones and work across the city of Dar es Salaam from three zones. This helped to reduce vulnerability to floods events. Before the MHEW's all the buses were operating from one zone at Jangwani and during rain season the Jangwani valley is normally flooded so the buses were flooded and transportation network in Dar es Salaam was disrupted by flood events.

The second scenario is the Marine transportation, the MHEW's products are used to plan transport from Dar es Salaam port to Zanzibar or Pemba. I remember when TMA issues high wind speed warnings and high waves, the marine transporters change their trip or sometimes they reschedule days for travel.

# DARAJA

## Developing Anticipatory Risk Awareness and Joint Action

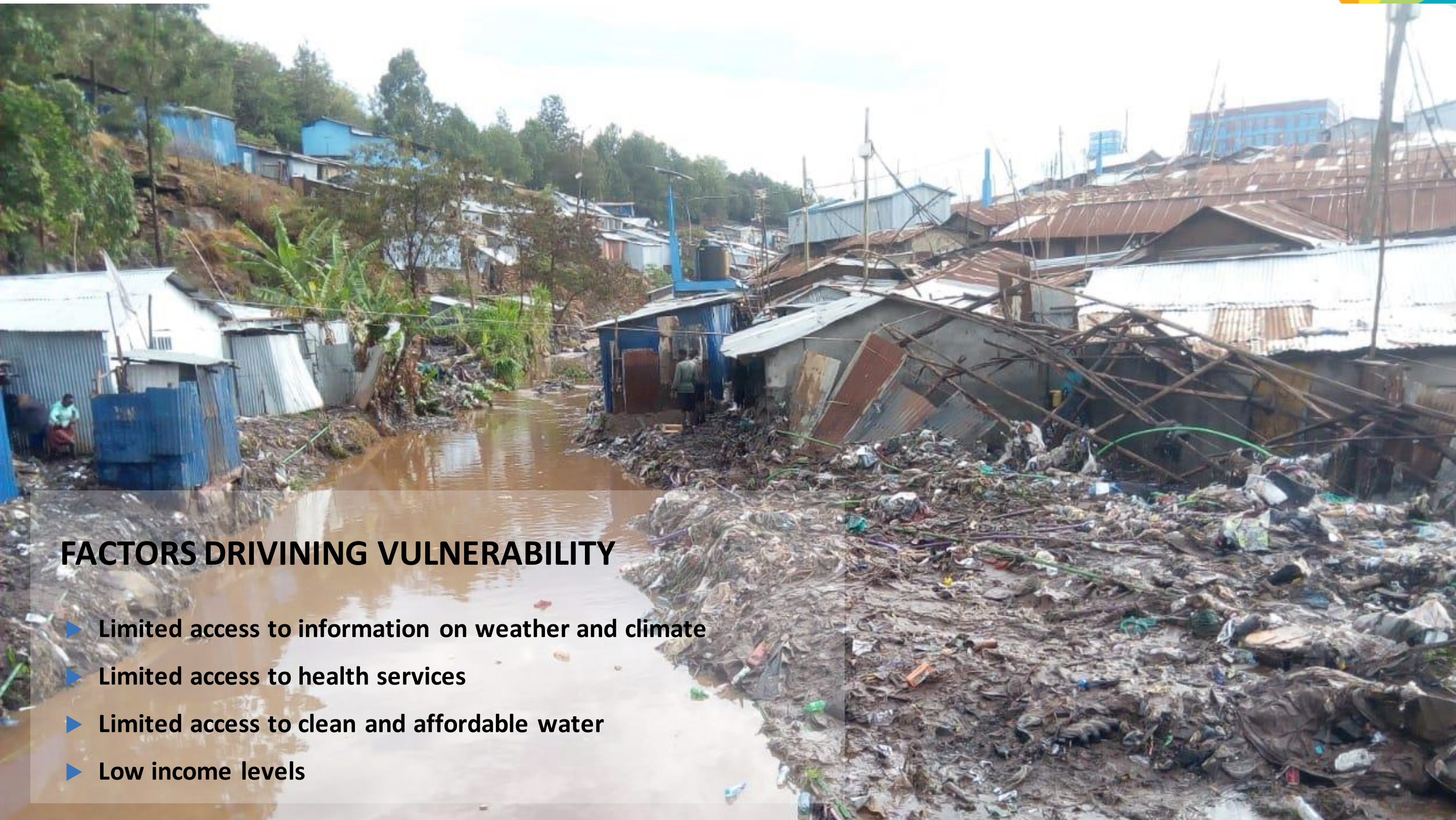
### Purpose

Co-production of weather and climate information services, which are particularly relevant to poor urban communities in Tanzania (Dar es Salaam) and Kenya (Nairobi)

(Urban resilience...)







## FACTORS DRIVING VULNERABILITY

- ▶ Limited access to information on weather and climate
- ▶ Limited access to health services
- ▶ Limited access to clean and affordable water
- ▶ Low income levels



WHAT ARE THE KEY ACTIVITIES?

## KEY PROJECT ACTIVITIES

- 1) Initial **scoping** and analysis
- 2) Understanding and mapping the **information ecosystems** at city-wide and settlement level
- 3) **Co-design** and **deployment** of 2 **pilot projects** (1 at settlement level ; 1 city-wide per city)
- 4) **Sharing** emerging **learnings** and assessing potential for **scale-up**

# PILOT PROJECTS CO-DESIGN PROCESS – REFERENCE GUIDES



# PILOT PROJECTS CO-DESIGN PROCESS – FORECAST ADJUSTMENTS

REPUBLIC OF KENYA  
 MINISTRY OF ENVIRONMENT AND FORESTRY  
 COUNTY METEOROLOGICAL DEPARTMENT  
 County Meteorological Office, Nairobi P. O. Box 19021-00501, Nairobi, Kenya.  
 Tel: +254721743947  
 e-mail: [cdmnairobi@meteo.go.ke](mailto:cdmnairobi@meteo.go.ke), Website: <http://www.meteo.go.ke>

Weekly weather forecast for Nairobi County  
 Valid from Thursday 12<sup>th</sup> September to Wednesday 18<sup>th</sup> September 2019  
 Issued on: 11<sup>th</sup> April 2019

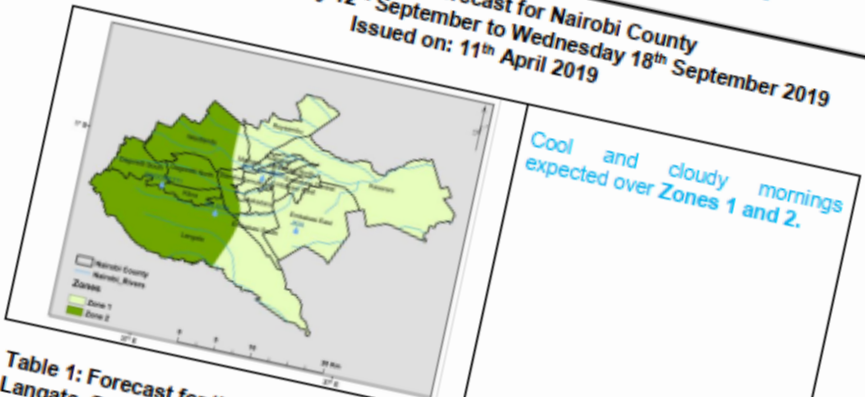


Table 1: Forecast for the Next 7 days for Zone 1 (Westlands, Dagoretti, Kibra, Langata, Starehe)

	Thursday 12 <sup>th</sup> Sep	Friday 13 <sup>th</sup> Sep	Saturday 14 <sup>th</sup> Sep	Sunday 15 <sup>th</sup> Sep	Monday 16 <sup>th</sup> Sep	Tuesday 17 <sup>th</sup> Sep	Wednesday 18 <sup>th</sup> Sep
Morning 6am - Noon	Cloudy	Sunny intervals	Light rain	Cloudy	Light rain	Cloudy	Cloudy
Afternoon Noon - 6pm	Sunny intervals	Sunny intervals	Light rain	Cloudy	Light rain	Sunny intervals	Sunny intervals
Night 6pm - 6am	Partly cloudy	Partly cloudy	Partly cloudy	Showers	Sunny intervals	Sunny intervals	Sunny intervals
Rainfall distribution							
Maximum temperature	20 - 25C	22 - 26C	22 - 26C	20 - 25C	21 - 26C	21 - 26C	22 - 26C
Minimum temperature	11 - 13C	12 - 14C	12 - 14C	11 - 14C	12 - 15C	11 - 14C	12 - 15C
Weather conditions	Green	Amber	Green	Green	Green	Green	Green
Hazards							

Commentary of county weather forecast and advice to city residents for Zone 1

- Cool cloudy morning breaking into sunny intervals with a possibility of light rains on Saturday and Monday.
- A chance of light rains on Sunday, Monday and Tuesday night.
- A chance of showers on Sunday afternoon over few places.

Table 2: Forecast for the next 7 days for Zone 2 (Matilani, Kasarani, Shauri Moyo, Kamukumu, Mabarak, Embakasi)

Thursday 12 <sup>th</sup> Sep	Friday 13 <sup>th</sup> Sep	Saturday 14 <sup>th</sup> Sep	Sunday 15 <sup>th</sup> Sep	Monday 16 <sup>th</sup> Sep	Tuesday 17 <sup>th</sup> Sep	Wednesday 18 <sup>th</sup> Sep
Cloudy	Sunny intervals	Cloudy	Cloudy	Light rain	Cloudy	Cloudy
Partly cloudy	Sunny intervals	Sunny intervals	Showers	Sunny intervals	Sunny intervals	Sunny intervals
Partly cloudy	Partly cloudy	Partly cloudy	Partly cloudy	Light rain	Partly cloudy	Partly cloudy
			Few places	Few places		
2 - 27 C	22 - 27C	22 - 27C	22 - 26C	23 - 27C	23 - 27C	22 - 27C
13 - 14C	12 - 15C	13 - 15C	13 - 17C	12 - 17C	11 - 16C	11 - 16C
Green	Green	Green	Green	Green	Green	Green

Summary of county weather forecast and advice to city residents for Zone 2  
 Cool cloudy morning, breaking into sunny intervals with a possibility of light rains on Monday. A chance of showers on Sunday afternoon.

Work for the following week: Thursday 19<sup>th</sup> September to Wednesday 25<sup>th</sup> September  
 Possibility of morning rains and afternoon showers over few places within the county.

Our coding of weather conditions:

Green	No severe weather is expected.
Amber	Severe weather conditions are likely to occur that may pose a threat to life and damage property. Be prepared
Red	Dangerous and potentially life threatening weather conditions are expected. Take appropriate action immediately to ensure your safety and the safety of your family and neighbours.

Key for symbols showing spatial rainfall distribution

	Rain likely to fall in few places (<33%)
	Rain likely to fall in several places (33-66%)
	Rain likely to fall in most places (more than 66%)

For further information, please contact:  
 County Director of Meteorological Services: Pascaline Chemaiyo  
 For more information about the weather in Kenya, please visit: <http://www.meteo.go.ke/>

# PILOT PROJECTS CO-DESIGN PROCESS – COMMUNITY COMMUNICATION SYSTEM



PILOT PROJECTS CO-DESIGN PROCESS - PROJECT IDENTITY



# AT SETTLEMENT SCALE – RADIO PROGRAMMING

**Pamoja FM Radio. The Voice of Kibera.**  
30 April · 🌐

Weather Mtaani  
#RadaYaWeather  
#TuamkePamoja  
Kama wakazi mtaani, tumechukua jukumu kuzuia uwezekano wa madhara kutokana na hali ya hewa. Tumeweka mashauri na onyo mitaani kutoa taarifa kuhusu uwezekano wa madhara na maandalizi mazuri kufanyika. Tunatarajia hali itabadilika ~lan



👍 22      💬 2 comments      ➦ 2 shares

**Pamoja FM Radio. The Voice of Kibera.**  
14 May · 🌐

Weather Mtaani  
#RadaYaWeather  
uwezekano katika utabiri wa hali ya hewa huwa na maana...  
...kutoka kwa idara ya utabiri wa hali ya hewa ndani...  
...mkePamoja  
...oni tunaye BW. Chris kutoka Kenya Meteorological D...



...ou, Pamoja FM Radio. The Voice of Kibera. and 14 others

👍 Like      💬 Comment      ➦ Share

**Pamoja FM Radio. The Voice of Kibera.**  
4 June at 08:18 · 🌐

Ni ule wakati wa WEATHER MTAANI.  
#RadaYaWeather ikoje.  
#TuamkePamoja  
Tunauliza Je, mabadiliko ya hali ya hewa yamekuathiri vipi?



👍 You, Tofa Chris and 45 others      💬 11 comments

# DECENTRALIZATION OF CLIMATE SERVICES IN KENYA

- KMD decentralised her services on 3<sup>rd</sup> September, 2012- following the promulgation of the new constitution that created 47 developed units (counties)
- KMD deployed meteorologists (County Directors of Meteorological Services-CDMS) in 47 counties.
- Duties include providing CIS to the County



# WISER Phase I: Decentralisation of climate information services in Western Kenya

- Through WISER support the following products were developed for 9 counties in western Kenya:
  - County downscaled weather warnings and alerts
  - County downscaled weekly by daily forecasts
  - County downscaled monthly forecasts
  - **Coproduced seasonal forecast through Participatory Scenario Planning (PSP)**
- (PSP) approach brings together meteorologists, local forecasters, researchers, community members (women, youth, men), local government sectors, private sector actors, local NGOs and media.
- The PSP workshops provide these actors with a common forum in which to discuss important issues affecting the local area in relation to, and going beyond, seasonal climate forecasts.
- These are stakeholders who would not normally meet, yet their collective knowledge and expertise is essential for informed and successful adaptation.
- New communication platforms:
  - Use of trained intermediaries of climate information (Agricultural extension staff; local administrators; Heads of CBOs, Farmer Groups, Faith Based Organisations) to interpret SMS early warnings and alerts and forecasts and livelihood advisories to their members and farmers
  - Use of FM local stations to pass the climate information in local language to the surrounding communities
  - Use of social media (WhatsApp, facebook, email, facebook page, cdms website)
  - press release of early warnings and alerts by CDMS
  - **County Climate Information Services Plan**

**KMD has started rolling all the products and services in the other remaining counties**

# Support to ICPAC (W2-SIP)

## Purpose

To improve the development, uptake and use of sub-seasonal, seasonal and long-term timescale products and services for regional applications.



# Support to ICPAC (W2-SIP)



## Key Expected Outputs

- Enhance the resilience and prosperity of ICPAC member states by fostering climate services and knowledge.
- ICPAC staff will gain increased skills in co-production approaches including facilitation skills for co-producing climate services with users.

## Delivery Partners



IGAD Climate Prediction and Applications Centre  
"Fostering Climate Prediction and Applications"



International Research Institute  
for Climate and Society  
EARTH INSTITUTE | COLUMBIA UNIVERSITY



Supported by:



# SOME OUTPUTS FROM WISER SUPPORT TO ICPAC

- Implementation of ENACTS:
- improve the availability, access and use of climate information by working directly with National Meteorological and Hydrological Services (NMHS).
- launch of ENACTS in Uganda and Kenya, (2) strengthening of ENACTS in Ethiopia, Tanzania and Rwanda by generating daily climate data (Ethiopia and Rwanda)
- building capacity at ICPAC,

# W2SIP Achievements – Objective 1

- Computer Hardware (HPC) equipment acquired and operationalized at NHGONG
  - NMHSs given accounts on the cluster – Utilized for GHACOF53
  - Account credentials formally sent to NMHSs by ICPAC Director
  - Improved and fast access to ENACTS Maprooms, web portal
- **ICPACs Prototype Consolidated Seasonal forecast system**
  - Objective Consolidated Seasonal Forecast System developed and implemented beginning GHACOF52 in May 2019
  - At present average of CPT forecasts and ensemble local regression model results of 7-9 GCMs consolidated
- Developed Consensus (GHACOF51) and Objective Consolidated (GHACOF52 & 53) Outlooks

For more information visit us online at:

[metoffice.gov.uk/wiser](http://metoffice.gov.uk/wiser)



#UKaidWISER



[Lnked.in/wiser](https://lnkd.in/w/wiser)

**THANK YOU FOR YOUR KIND ATTENTION**